

Recombinant Human GIPC2 Protein, Myc/DDK-tagged, C13 and N15-labeled

Cat. No. GIPC2-3114H **Lot. No.** (See product label)

SPECIFICATION

Product Overview	GIPC2 MS Standard C13 and N15-labeled recombinant protein (NP_060125) with a C-terminal MYC/DDK tag, was expressed in HEK293 cells.
Species	Human
Source	HEK293
Description	GIPC2 (GIPC PDZ Domain Containing Family Member 2) is a Protein Coding gene. Diseases associated with GIPC2 include Epilepsy With Generalized Tonic-Clonic Seizures. An important paralog of this gene is GIPC1.
Molecular Mass	34.3 kDa
AA Sequence	MPLKLRGKKKAKSKETAGLVEGEPTGAGGGSLASRAPARRLVFHAQLAHGSATG RVEGFSSIQELYAQIAGAFEISPSEILYCTLNTPKIDMERLLGGQLGLEDIFIFAHVKGIE KEVNVYKSEDSLGLTITDNGVGYAFIKRIKDGGVIDSVKTICVGDHIESINGENIVGWR HYDVAKKLKELKKEELFTMKLIEPKKAFEIEPRSKAGKSSGEKIGCGRATLRLRSKGP ATVEEMPSETKAKAIEKIDDVLELYMGIRDIDLATTMFEAGKDKVNPDEFAVALDETL GDFAFPDEFVFDVWGVIGDAKRRLTRTRPLEQKLISEEDLAANDILDYKDDDDKV
Purity	> 80% as determined by SDS-PAGE and Coomassie blue staining
Stability	Stable for 3 months from receipt of products under proper storage and handling conditions.

 Tel: 1-631-559-9269 1-516-512-3133

 Email: info@creative-biomart.com  Fax: 1-631-938-8127

 45-1 Ramsey Road, Shirley, NY 11967, USA

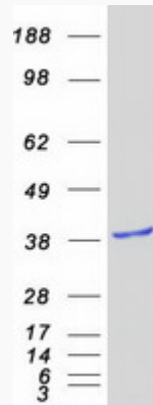
Storage	Store at -80 centigrade. Avoid repeated freeze-thaw cycles.
Concentration	50 µg/mL as determined by BCA
Storage Buffer	100 mM glycine, 25 mM Tris-HCl, pH 7.3.
GENE INFORMATION	
Gene Name	GIPC2 GIPC PDZ domain containing family member 2 [Homo sapiens (human)]
Official Symbol	GIPC2
Synonyms	GIPC2; GIPC PDZ domain containing family, member 2; PDZ domain-containing protein GIPC2; FLJ20075; semaphorin cytoplasmic domain associated protein 2; SEMCAP 2; PDZ domain protein GIPC2; semaF cytoplasmic domain associated protein 2; SEMCAP2; SEMCAP-2;
Gene ID	54810
mRNA Refseq	NM_017655
Protein Refseq	NP_060125
MIM	619089
UniProt ID	Q8TF65

 Tel: 1-631-559-9269 1-516-512-3133

 Email: info@creative-biomart.com  Fax: 1-631-938-8127

 45-1 Ramsey Road, Shirley, NY 11967, USA

SDS-PAGE



 Tel: 1-631-559-9269 1-516-512-3133

 Email: info@creative-biomart.com  Fax: 1-631-938-8127

 45-1 Ramsey Road, Shirley, NY 11967, USA