

Recombinant Human GIPC2 Protein, GST-tagged

Cat. No. GIPC2-4915H Lot. No. (See product label)

SPECIFICATION

Product Overview	Human GIPC2 full-length ORF (AAH36075.1, 1 a.a. - 315 a.a.) recombinant protein with GST-tag at N-terminal.
Species	Human
Source	Wheat Germ
Description	GIPC2 (GIPC PDZ Domain Containing Family Member 2) is a Protein Coding gene. An important paralog of this gene is GIPC1.
Molecular Mass	60.7 kDa
AA Sequence	MPLKLRGKKKAKSKETAGLVEGEPTGAGGGSLASRAPARRLVFHAQLAHGSATG RVEGFSSIQELYAQIAGAFEISPSEILYCTLNTPKIDMERLLGGQLGLEDFIFAHVKGIE KEVNVYKSEDSLGLTITDNGVGYAFIKRIKDGGVIDSVKTICVGDHIESINGENIVGWR HYDVAKKLKELKKEELFTMKLIEPKKAFEIEPRSKAGKSSGEKIGCGRATLRLRSKGP ATVEEMPSETKAKAIEKIDDVLELYMGIRDIDLATTMFEAGKDKVNPDEFAVALDETL GDFAFPDEFVFDVWGVIGDAKRRGL
Applications	Enzyme-linked Immunoabsorbent Assay Western Blot (Recombinant protein) Antibody Production Protein Array
Notes	Best use within three months from the date of receipt of this protein.

 Tel: 1-631-559-9269 1-516-512-3133

 Email: info@creative-biomart.com  Fax: 1-631-938-8127

 45-1 Ramsey Road, Shirley, NY 11967, USA

Storage Store at -80 centigrade. Aliquot to avoid repeated freezing and thawing.

Storage Buffer 50 mM Tris-HCl, 10 mM reduced Glutathione, pH=8.0 in the elution buffer.

GENE INFORMATION

Gene Name [GIPC2 GIPC PDZ domain containing family, member 2 \[Homo sapiens \]](#)

Official Symbol [GIPC2](#)

Synonyms GIPC2; GIPC PDZ domain containing family, member 2; PDZ domain-containing protein GIPC2; FLJ20075; semaphorin cytoplasmic domain associated protein 2; SEMCAP 2; PDZ domain protein GIPC2; semaF cytoplasmic domain associated protein 2; SEMCAP2; SEMCAP-2;

Gene ID [54810](#)

mRNA Refseq [NM_017655](#)

Protein Refseq [NP_060125](#)

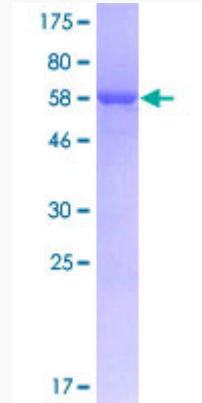
UniProt ID [Q8TF65](#)

 Tel: 1-631-559-9269 1-516-512-3133

 Email: info@creative-biomart.com  Fax: 1-631-938-8127

 45-1 Ramsey Road, Shirley, NY 11967, USA

**Quality Control
Testing**



12.5% SDS-PAGE Stained with Coomassie Blue.

 Tel: 1-631-559-9269 1-516-512-3133

 Email: info@creative-biomart.com  Fax: 1-631-938-8127

 45-1 Ramsey Road, Shirley, NY 11967, USA