

Recombinant Human GIPR Full Length Transmembrane protein, His-tagged

Cat. No. GIPR-1912H Lot. No. (See product label)

SPECIFICATION

Product Overview

Recombinant Human GIPR protein(P48546)(22-466aa), fused with N-terminal His tag, was expressed in in vitro E. coli expression system.

Species

Human

Source

E.coli

ProteinLength

22-466aa

Form

If the delivery form is liquid, the default storage buffer is Tris/PBS-based buffer, 5%-50% glycerol.
If the delivery form is lyophilized powder, the buffer before lyophilization is Tris/PBS-based buffer, 6% Trehalose, pH 8.0.

Molecular Mass

52.4 kDa

AA Sequence

RAETGSKGQTAGELYQRWERYRRECQETLAAAEPSPGLACNGSFDMYVCWDYAA
PNATARASCPWYLPWHHHVAAGFVLRQCGSDGQWGLWRDHTQCENPEKNEAFL
DQRLILERLQVMYTVGYSLATLLALLILSLFRRLHCTRNYIHINLFTSFMLRAAAIIS
RDRLLPRPGPYLGDQALALWNQALAACRTAQIVTQYCVGANYSWLLVEGVYLSLL
VLVGGSEEGHFRYYLLLGGWAPALFVIPWVIVRYLYENTQCWERNEVKAIWIIIRTP
LMTILINFLIFIRILGILLSKLRTRQMRCDYRLRLARSTLTLVPLLGVHEVVFAPVTEEQ
ARGALRFAKLGFEIFLSSFQGLVSVLYCFINKEVQSEIRRGWHHCRLRRSLGEEQR
QLPERAFRALPSGSGPGEVPTSRGLSSGTLPGPGNEASRELESYC

 Tel: 1-631-559-9269 1-516-512-3133

 Email: info@creative-biomart.com  Fax: 1-631-938-8127

 45-1 Ramsey Road, Shirley, NY 11967, USA

Purity	Greater than 85% as determined by SDS-PAGE.
Storage	Store at -20°C/-80°C upon receipt, aliquoting is necessary for mutiple use. Avoid repeated freeze-thaw cycles.
Reconstitution	Please reconstitute protein in deionized sterile water to a concentration of 0.1-1.0 mg/mL. We recommend to add 5-50% of glycerol (final concentration) and aliquot for long-term storage at -20°C/-80°C.

GENE INFORMATION

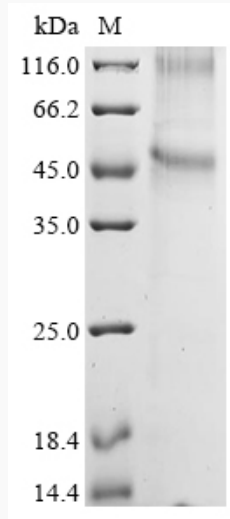
Gene Name	GIPR gastric inhibitory polypeptide receptor [Homo sapiens]
Official Symbol	GIPR
Synonyms	GIPR; gastric inhibitory polypeptide receptor; GIP-R; glucose-dependent insulinotropic polypeptide receptor; PGQTL2; MGC126722;
Gene ID	2696
mRNA Refseq	NM_000164
Protein Refseq	NP_000155
UniProt ID	P48546

 Tel: 1-631-559-9269 1-516-512-3133

 Email: info@creative-biomart.com  Fax: 1-631-938-8127

 45-1 Ramsey Road, Shirley, NY 11967, USA

SDS-PAGE



 Tel: 1-631-559-9269 1-516-512-3133

 Email: info@creative-biomart.com  Fax: 1-631-938-8127

 45-1 Ramsey Road, Shirley, NY 11967, USA