

Active Recombinant Human GIPR Fc Chimera

Cat. No. GIPR-22H Lot. No. (See product label)

SPECIFICATION

Product Overview	Human embryonic kidney cell, HEK293-derived human GIPR protein.
Species	Human
Source	HEK293
Form	Lyophilized from a 0.2 µm filtered solution in PBS with Trehalose.
Bio-activity	Measured by its binding ability in a functional ELISA. When Biotinylated Human GIP Peptide is captured on a Streptavidin Coated Plate, it binds to Recombinant Human GIPR Fc Chimera. The ED50 for this binding is 20.0-100 ng/mL.
Molecular Mass	Predicted Molecular Mass: 40 kDa SDS-PAGE: 45-59 kDa, under reducing conditions.
N-terminal Sequence Analysis	Gly26
Endotoxin	<0.10 EU per 1 µg of the protein by the LAL method.
Purity	>95%
Storage	Use a manual defrost freezer and avoid repeated freeze-thaw cycles. 12 months from date of receipt, -20 to -70 centigrade as supplied. 1 month, 2 to 8 centigrade under sterile conditions after reconstitution.

 Tel: 1-631-559-9269 1-516-512-3133

 Email: info@creative-biomart.com  Fax: 1-631-938-8127

 45-1 Ramsey Road, Shirley, NY 11967, USA

3 months, -20 to -70 centigrade under sterile conditions after reconstitution.

Reconstitution Reconstitute at 500 µg/mL in PBS.

Handling Avoid inhalation, contact with eyes, skin and clothing. Avoid the formation of dust and aerosols. Use in a well-ventilated area. Keep away from sources of ignition. Avoid prolonged or repeated exposure.

Shipping The product is shipped at ambient temperature. Upon receipt, store it immediately at the temperature recommended below.

GENE INFORMATION

Gene Name [GIPR gastric inhibitory polypeptide receptor \[Homo sapiens \(human\) \]](#)

Official Symbol [GIPR](#)

Synonyms Gastric inhibitory polypeptide receptor; GIPR; GIP-R; Glucose-dependent insulinotropic polypeptide receptor; MGC126722; PGQTL2

Gene ID [2696](#)

mRNA Refseq [NM_000164](#)

Protein Refseq [NP_000155](#)

MIM [137241](#)

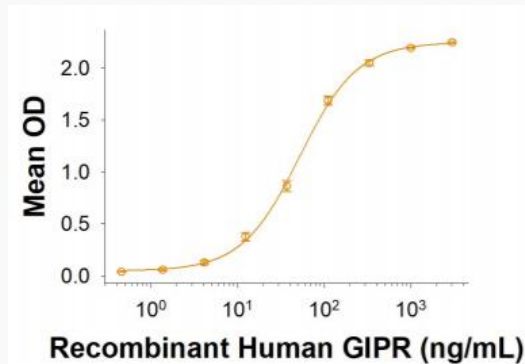
UniProt ID [P48546](#)

 Tel: 1-631-559-9269 1-516-512-3133

 Email: info@creative-biomart.com  Fax: 1-631-938-8127

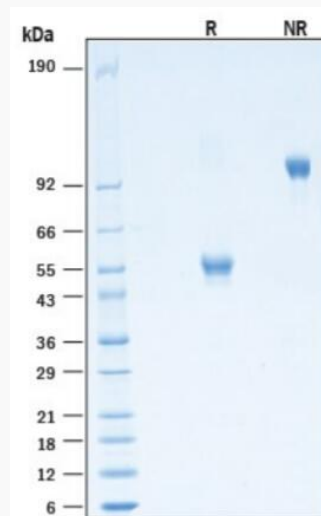
 45-1 Ramsey Road, Shirley, NY 11967, USA

**Recombinant Human
GIPR Fc Chimera
Protein Binding
Activity.**




When Biotinylated Human GIP Peptide is captured on a Streptavidin Coated Plate, it binds to Recombinant Human GIPR Fc Chimera Protein. The ED50 for this binding is 20.0-100 ng/mL.

**Recombinant Human
GIPR Fc Chimera
Protein SDS-PAGE.**



2 µg/lane of Recombinant Human GIPR Fc Chimera Protein was resolved with SDS-PAGE under reducing (R) and non-reducing (NR) conditions and visualized by Coomassie® Blue staining, showing bands at 45-59 kDa and 90-120 kDa, respectively.

 Tel: 1-631-559-9269 1-516-512-3133

 Email: info@creative-biomart.com  Fax: 1-631-938-8127

 45-1 Ramsey Road, Shirley, NY 11967, USA