

Recombinant Human GIT2 Protein, GST-tagged

Cat. No. GIT2-4917H Lot. No. (See product label)

SPECIFICATION

Product Overview	Human GIT2 full-length ORF (AAH01379, 1 a.a. - 471 a.a.) recombinant protein with GST-tag at N-terminal.
Species	Human
Source	Wheat Germ
Description	<p>This gene encodes a member of the GIT protein family, which interact with G protein-coupled receptor kinases and possess ADP-ribosylation factor (ARF) GTPase-activating protein (GAP) activity. GIT proteins traffic between cytoplasmic complexes, focal adhesions, and the cell periphery, and interact with Pak interacting exchange factor beta (PIX) to form large oligomeric complexes that transiently recruit other proteins. GIT proteins regulate cytoskeletal dynamics and participate in receptor internalization and membrane trafficking. This gene has been shown to repress lamellipodial extension and focal adhesion turnover, and is thought to regulate cell motility. This gene undergoes extensive alternative splicing to generate multiple isoforms, but the full-length nature of some of these variants has not been determined. The various isoforms have functional differences, with respect to ARF GAP activity and to G protein-coupled receptor kinase 2 binding. [provided by RefSeq</p>
Molecular Mass	77.33 kDa
AA Sequence	MSKRLRSSEVCADCSGPDPSWASVNRGTFLCDECCSVHRSLGRHISQVRHLKHTP WPPTLLQMVETLYNNGANSIWEHSLLDPASIMSGRRKANPQDKVHPNKAEFIRAKY

 Tel: 1-631-559-9269 1-516-512-3133

 Email: info@creative-biomart.com  Fax: 1-631-938-8127

 45-1 Ramsey Road, Shirley, NY 11967, USA

QMLAFVHRLPCRDDDSVTAKDLSKQLHSSVRTGNLETCLRLLSLGAQANFFHPEKG
 NTPLHVASKAGQILQAELLAVYGADPGTQDSSGKTPVDYARQGGHHELAERLVEIQ
 YELTDRLAFYLCGRKPDHKNGQHFIIPQMADSSLDLSELAKAACKKLQSLSNHLFEEL
 AMDMYDEVDRRETDAVWLATQNHSAVLTETTVPFLPVNPEYSSTRNQGRQKLAR
 FNAHEFATLVIDILSDAKRRQQGSSLSGSKDNVELIKTINNQHVESQDNDQPDYDS
 VASDEDTDLETTASKTNRQKSLDSDLSGDPVTVQEFMEVKNALVASEAKIQQLMKV
 NNNLSDEL RIMQKLLGKDAN

Applications
 Enzyme-linked Immunoabsorbent Assay
 Western Blot (Recombinant protein)
 Antibody Production
 Protein Array

Notes
 Best use within three months from the date of receipt of this protein.

Storage
 Store at -80 centigrade. Aliquot to avoid repeated freezing and thawing.

Storage Buffer
 50 mM Tris-HCl, 10 mM reduced Glutathione, pH=8.0 in the elution buffer.

GENE INFORMATION

Gene Name
 GIT2 G protein-coupled receptor kinase interacting ArfGAP 2 [Homo sapiens]

Official Symbol
 GIT2

Synonyms
 GIT2; G protein-coupled receptor kinase interacting ArfGAP 2; G protein coupled receptor kinase interactor 2; ARF GTPase-activating protein GIT2; KIAA0148; ARF GAP GIT2; GRK-interacting protein 2; G protein-coupled receptor kinase-interactor 2; cool-associated, tyrosine phosphorylated protein 2; cool-interacting tyrosine-phosphorylated protein 2; CAT2; CAT-2; MGC760; DKFZp686G01261;

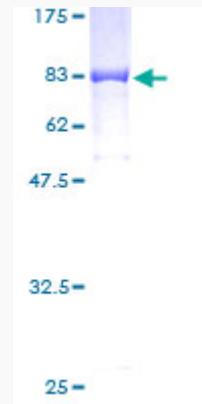
 Tel: 1-631-559-9269 1-516-512-3133

 Email: info@creative-biomart.com  Fax: 1-631-938-8127

 45-1 Ramsey Road, Shirley, NY 11967, USA

Gene ID	9815
mRNA Refseq	NM_001135213
Protein Refseq	NP_001128685
MIM	608564
UniProt ID	Q14161

**Quality Control
Testing**



12.5% SDS-PAGE Stained with Coomassie Blue.

 Tel: 1-631-559-9269 1-516-512-3133

 Email: info@creative-biomart.com  Fax: 1-631-938-8127

 45-1 Ramsey Road, Shirley, NY 11967, USA