

Recombinant Human GIT2 Protein, Myc/DDK-tagged, C13 and N15-labeled

Cat. No. GIT2-874H **Lot. No.** (See product label)

SPECIFICATION

Product Overview	GIT2 MS Standard C13 and N15-labeled recombinant protein (NP_631940) with a C-terminal MYC/DDK tag, was expressed in HEK293 cells.
Species	Human
Source	HEK293
Description	<p>This gene encodes a member of the GIT protein family, which interact with G protein-coupled receptor kinases and possess ADP-ribosylation factor (ARF) GTPase-activating protein (GAP) activity. GIT proteins traffic between cytoplasmic complexes, focal adhesions, and the cell periphery, and interact with Pak interacting exchange factor beta (PIX) to form large oligomeric complexes that transiently recruit other proteins. GIT proteins regulate cytoskeletal dynamics and participate in receptor internalization and membrane trafficking. This gene has been shown to repress lamellipodial extension and focal adhesion turnover, and is thought to regulate cell motility. This gene undergoes extensive alternative splicing to generate multiple isoforms, but the full-length nature of some of these variants has not been determined. The various isoforms have functional differences, with respect to ARF GAP activity and to G protein-coupled receptor kinase 2 binding.</p>
Molecular Mass	52.6 kDa
AA Sequence	MSKRLRSSEVCADCSGPDPSWASVNRGTFLCDECCSVHRSLGRHISQVRHLKHTP

 Tel: 1-631-559-9269 1-516-512-3133

 Email: info@creative-biomart.com  Fax: 1-631-938-8127

 45-1 Ramsey Road, Shirley, NY 11967, USA

WPPTLLQMVETLYNNGANSIWEHSLLDPASIMSGRRKANPQDKVHPNKAEFIRAKY
 QMLAFVHRLPCRDDDSVTAKDLSKQLHSSVRTGNLETCLRLLSLGAQANFFHPEKG
 NTPLHVASKAGQILQAELLAVYGADPGTQDSSGKTPVDYARQGGHHELAERLVEIQ
 YELTDRLAFYLCGRKPDHKNQHFIIQPMADSSLDLSELAKAACKKLQSLSNHLFEEL
 AMDMYDEVDRRETDAVWLATQNHSAVLTETTVPFLPVNPEYSSTRNQGRQKLAR
 FNAHEFATLVIDILSDAKRRQQGSSLSGSKDNVELILKTINNQHSHVESQDNDQPDYDS
 VASDEDTDLETTASKTNRQKSLDSDLSDGPVTVQEFMEVKNALVASEAKIQQLMKV
 NNNLSDEL RIMQKLLGKDANTRTRPLEQKLISEEDLAANDILDYKDDDDKV

Purity > 80% as determined by SDS-PAGE and Coomassie blue staining

Stability Stable for 3 months from receipt of products under proper storage and handling conditions.

Storage Store at -80 centigrade. Avoid repeated freeze-thaw cycles.

Concentration 50 µg/mL as determined by BCA

Storage Buffer 100 mM glycine, 25 mM Tris-HCl, pH 7.3.

GENE INFORMATION

Gene Name [GIT2 G protein-coupled receptor kinase interacting ArfGAP 2 \[Homo sapiens \(human\) \]](#)

Official Symbol [GIT2](#)

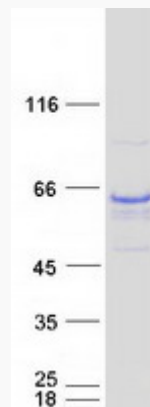
Synonyms GIT2; G protein-coupled receptor kinase interacting ArfGAP 2; G protein coupled receptor kinase interactor 2; ARF GTPase-activating protein GIT2; KIAA0148; ARF GAP GIT2; GRK-interacting protein 2; G protein-coupled receptor kinase-interactor 2; cool-associated, tyrosine phosphorylated protein 2; cool-interacting tyrosine-

 Tel: 1-631-559-9269 1-516-512-3133

 Email: info@creative-biomart.com  Fax: 1-631-938-8127

 45-1 Ramsey Road, Shirley, NY 11967, USA

phosphorylated protein 2; CAT2; CAT-2; MGC760; DKFZp686G01261;

Gene ID 9815**mRNA Refseq** NM_139201**Protein Refseq** NP_631940**MIM** 608564**UniProt ID** Q14161**SDS-PAGE** Tel: 1-631-559-9269 1-516-512-3133 Email: info@creative-biomart.com  Fax: 1-631-938-8127 45-1 Ramsey Road, Shirley, NY 11967, USA