

## Recombinant Human GJA1 Protein, His-tagged

Cat. No. GJA1-15H Lot. No. (See product label)

### SPECIFICATION

<b>Product Overview</b>	Recombinant Human GJA1 Protein(P17302)(1-382 aa), fused with C-terminal His tag, was expressed in Mammalian cells.
<b>Species</b>	Human
<b>Source</b>	Mammalian cells
<b>ProteinLength</b>	1-382 aa
<b>Form</b>	Lyophilized from a 0.2 µm filtered PBS, 6% Trehalose, pH 7.4.
<b>Molecular Mass</b>	44.4 kDa
<b>AASequence</b>	MGDWSALGKLLDKVQAYSTAGGKVWLSVLFIFRILLGLTAVESAWGDEQSAFRCNT QQPGCENVCYDKSFPISHVRFWVLQIIFVSVPTLLYLAHVVFYVMRKEEKLNKKEEELK VAQTDGVNVDMHLKQIEIKKFKYGIEEHGKVKMRGGLLRITYIISILFKSIFEVAFLLIQW YIYGFSLSAVYTCKRDPCHQVDCFLSRPTEKTIFIIFMLVVSLVSLALNIIELFYVFFKG VKDRVKGKSDPYHATSGALSPAKDCGSQKYAYFNGCSSPTAPLSPMSPPGYKLV GDRNNSCRNYNKQASEQNWANYSAEQNRMGQAGSTISNSHAQPFDPPDDNQNS KKLAAGHELQPLAIVDQRPSSRASSRASSRPRPDDLEI
<b>Purity</b>	Greater than 95% as determined by SEC-HPLC.
<b>Storage</b>	Store at -20°C/-80°C upon receipt, aliquoting is necessary for mutiple use. Avoid repeated freeze-thaw cycles.

Tel: 1-631-559-9269 1-516-512-3133

Email: [info@creative-biomart.com](mailto:info@creative-biomart.com) Fax: 1-631-938-8127

45-1 Ramsey Road, Shirley, NY 11967, USA

**Reconstitution**

We recommend that this vial be briefly centrifuged prior to opening to bring the contents to the bottom. Please reconstitute protein in deionized sterile water to a concentration of 0.1-1.0 mg/mL. Aliquot for long-term storage at -80°C.

**GENE INFORMATION****Gene Name**

GJA1 gap junction protein, alpha 1, 43kDa [ Homo sapiens ]

**Official Symbol**

GJA1

**Synonyms**

GJA1; gap junction protein, alpha 1, 43kDa; gap junction protein, alpha 1, 43kDa (connexin 43) , gap junction protein, alpha like , GJAL, ODDD; gap junction alpha-1 protein; connexin 43; CX43; oculodentodigital dysplasia (syndactyly type III); ODD; ODOB; SDTY3; connexin-43; gap junction 43 kDa heart protein; HSS; GJAL; ODDD; AVSD3; HLHS1; DFNB38;

**Gene ID**

2697

**mRNA Refseq**

NM\_000165

**Protein Refseq**

NP\_000156

**MIM**

121014

**UniProt ID**

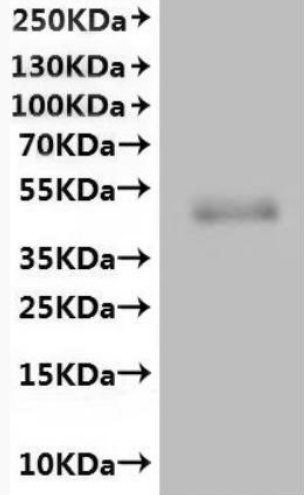
P17302

 Tel: 1-631-559-9269 1-516-512-3133

 Email: [info@creative-biomart.com](mailto:info@creative-biomart.com)  Fax: 1-631-938-8127

 45-1 Ramsey Road, Shirley, NY 11967, USA

**SDS-PAGE**



 Tel: 1-631-559-9269 1-516-512-3133

 Email: [info@creative-biomart.com](mailto:info@creative-biomart.com)  Fax: 1-631-938-8127

 45-1 Ramsey Road, Shirley, NY 11967, USA