

Recombinant Human GJA1 Protein, His-tagged

Cat. No. GJA1-2204H **Lot. No.** (See product label)

SPECIFICATION

Product Overview	Recombinant Human GJA1 Protein (Ser180-Ile382) with a N-His tag was expressed in E. coli.
Species	Human
Source	E.coli
ProteinLength	Ser180-Ile382
Description	<p>This gene is a member of the connexin gene family. The encoded protein is a component of gap junctions, which are composed of arrays of intercellular channels that provide a route for the diffusion of low molecular weight materials from cell to cell. The encoded protein is the major protein of gap junctions in the heart that are thought to have a crucial role in the synchronized contraction of the heart and in embryonic development. A related intronless pseudogene has been mapped to chromosome 5. Mutations in this gene have been associated with oculodentodigital dysplasia, autosomal recessive craniometaphyseal dysplasia and heart malformations.</p>
Form	Freeze-dried powder
Molecular Mass	Predicted Molecular Mass: 42.7 kDa Accurate Molecular Mass: 40 kDa
Endotoxin	<1.0 EU per 1g (determined by the LAL method).

 Tel: 1-631-559-9269 1-516-512-3133

 Email: info@creative-biomart.com  Fax: 1-631-938-8127

 45-1 Ramsey Road, Shirley, NY 11967, USA

Purity	> 90%
Applications	Positive Control; Immunogen; SDS-PAGE; WB.
Stability	The thermal stability is described by the loss rate. The loss rate was determined by accelerated thermal degradation test, that is, incubate the protein at 37 centigrade for 48h, and no obvious degradation and precipitation were observed. The loss rate is less than 5% within the expiration date under appropriate storage condition.
Storage	Avoid repeated freeze/thaw cycles. Store at 2-8 centigrade for one month. Aliquot and store at -80 centigrade for 12 months.
Storage Buffer	20mM Tris, 150mM NaCl, pH8.0, containing 1mM EDTA, 1mM DTT, 0.01% SKL, 5% Trehalose and Proclin300.
Reconstitution	Reconstitute in 20mM Tris, 150mM NaCl (pH8.0) to a concentration of 0.1-1.0 mg/mL. Do not vortex.

GENE INFORMATION

Gene Name	GJA1 gap junction protein alpha 1 [Homo sapiens (human)]
Official Symbol	GJA1
Synonyms	GJA1; gap junction protein alpha 1; HSS; CMDR; CX43; EKVP; GJAL; ODDD; AVSD3; EKVP3; HLHS1; PPKCA; gap junction alpha-1 protein connexin-43 gap junction 43 kDa heart protein gap junction protein, alpha 1, 43kDa
Gene ID	2697

 Tel: 1-631-559-9269 1-516-512-3133

 Email: info@creative-biomart.com  Fax: 1-631-938-8127

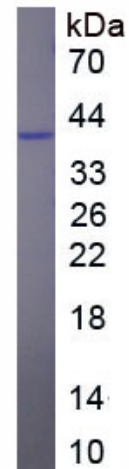
 45-1 Ramsey Road, Shirley, NY 11967, USA

mRNA Refseq [NM_000165](#)

Protein Refseq [NP_000156](#)

MIM [121014](#)

UniProt ID [P17302](#)



 Tel: 1-631-559-9269 1-516-512-3133

 Email: info@creative-biomart.com  Fax: 1-631-938-8127

 45-1 Ramsey Road, Shirley, NY 11967, USA