

## Recombinant Human GJA4 Protein, GST-tagged

Cat. No. GJA4-4922H Lot. No. (See product label)

### SPECIFICATION

<b>Product Overview</b>	Human GJA4 full-length ORF ( NP_002051.2, 1 a.a. - 333 a.a.) recombinant protein with GST-tag at N-terminal.
<b>Species</b>	Human
<b>Source</b>	Wheat Germ
<b>Description</b>	This gene encodes a member of the connexin gene family. The encoded protein is a component of gap junctions, which are composed of arrays of intercellular channels that provide a route for the diffusion of low molecular weight materials from cell to cell. Mutations in this gene have been associated with atherosclerosis and a higher risk of myocardial infarction. [provided by RefSeq]
<b>Molecular Mass</b>	63.8 kDa
<b>AA Sequence</b>	MGDWGFLEKLLDQVQEHSTVVGKIWLTVLFRILILGLAGESVWGDEQSDFEFCNTA QPGCTNVCYDQAFPISHIRYWVLQFLFVSTPTLVYLGHVIYLSRREERLRQKEGELR ALPAKDPQVERALAAVERQMAKISVAEDGRLRIRGALMGTYVASVLCKSVLEAGFLY GQWRLYGWTMEPVFVCQRAPCPYLVDGFVSRPTEKTIFIFMLVVGLISLVNLLELV HLLCRCLSRGMRARQGQDAPPTQGTSSDPYTDQVFFYLPVGQGPSSPPCPTYNGL SSSEQNWANLTTEERLASSRPPLFLDPPPQNGQKPPSRPSSSASKKQYV
<b>Applications</b>	Enzyme-linked Immunoabsorbent Assay Western Blot (Recombinant protein) Antibody Production

 Tel: 1-631-559-9269 1-516-512-3133

 Email: [info@creative-biomart.com](mailto:info@creative-biomart.com)  Fax: 1-631-938-8127

 45-1 Ramsey Road, Shirley, NY 11967, USA

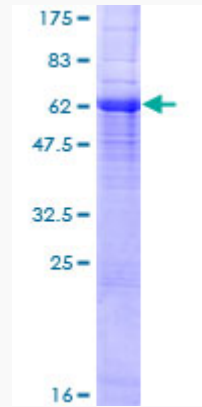
	Protein Array
<b>Notes</b>	Best use within three months from the date of receipt of this protein.
<b>Storage</b>	Store at -80 centigrade. Aliquot to avoid repeated freezing and thawing.
<b>Storage Buffer</b>	50 mM Tris-HCl, 10 mM reduced Glutathione, pH=8.0 in the elution buffer.
<b>GENE INFORMATION</b>	
<b>Gene Name</b>	GJA4 gap junction protein, alpha 4, 37kDa [ Homo sapiens ]
<b>Official Symbol</b>	GJA4
<b>Synonyms</b>	GJA4; gap junction protein, alpha 4, 37kDa; gap junction protein, alpha 4, 37kD (connexin 37), gap junction protein, alpha 4, 37kDa (connexin 37); gap junction alpha-4 protein; connexin 37; CX37; connexin-37;
<b>Gene ID</b>	2701
<b>mRNA Refseq</b>	NM_002060
<b>Protein Refseq</b>	NP_002051
<b>MIM</b>	121012
<b>UniProt ID</b>	P35212

 Tel: 1-631-559-9269 1-516-512-3133

 Email: [info@creative-biomart.com](mailto:info@creative-biomart.com)  Fax: 1-631-938-8127

 45-1 Ramsey Road, Shirley, NY 11967, USA

**Quality Control  
Testing**



12.5% SDS-PAGE Stained with Coomassie Blue.

 Tel: 1-631-559-9269 1-516-512-3133

 Email: [info@creative-biomart.com](mailto:info@creative-biomart.com)  Fax: 1-631-938-8127

 45-1 Ramsey Road, Shirley, NY 11967, USA