

# Recombinant Human GJA8 Protein, Myc/DDK-tagged, C13 and N15-labeled

**Cat. No.** GJA8-1535H    **Lot. No.** (See product label)

## SPECIFICATION

<b>Product Overview</b>	GJA8 MS Standard C13 and N15-labeled recombinant protein (NP_005258) with a C-terminal MYC/DDK tag, was expressed in HEK293 cells.
<b>Species</b>	Human
<b>Source</b>	HEK293
<b>Description</b>	This gene encodes a transmembrane connexin protein that is necessary for lens growth and maturation of lens fiber cells. The encoded protein is a component of gap junction channels and functions in a calcium and pH-dependent manner. Mutations in this gene have been associated with zonular pulverulent cataracts, nuclear progressive cataracts, and cataract-microcornea syndrome.
<b>Molecular Mass</b>	48 kDa
<b>AA Sequence</b>	<p>MGDWSFLGNILEEVNEHSTVIGRVWLTVLFIFRILILGTAAEFVWGDEQSDFCNTQQ            PGCENVCYDEAFPISHIRLWVLQIIFVSTPSLMYVGHAVHYVRMEEKRKSREAELG            QQAGTNGGPDQGSVKKSSGSKGTTKFRLEGTLRITYICHIIIFKTLFEVGFIVGHYFLY            GFRILPLYRCSRWPCPNVDCFVSRPTEKTIFILFMLSVASVSLFLNVMELGHLGLKG            IRSALKRPVEQPLGEIPEKSLHSIAVSSIQKAKGYQLLEEEKIVSHYFPLTEVGMVETS            PLPAKPFNQFEKISTGPLGDLSRGYQETLPSYAQVGAQEVEGEGPPAEEGAPEV            GEKKEEAERLTTEEQEKVAVPEGEKVETPGVDKEGEKEEPQSEKVSQGLPAEKP            SLCPELTDDARPLSRLSKASSRARSDDLTVTRTRPLEQKLISEEDLAANDILDYKDD</p>

 Tel: 1-631-559-9269    1-516-512-3133

 Email: [info@creative-biomart.com](mailto:info@creative-biomart.com)     Fax: 1-631-938-8127

 45-1 Ramsey Road, Shirley, NY 11967, USA

	DDKV
<b>Purity</b>	> 80% as determined by SDS-PAGE and Coomassie blue staining
<b>Stability</b>	Stable for 3 months from receipt of products under proper storage and handling conditions.
<b>Storage</b>	Store at -80 centigrade. Avoid repeated freeze-thaw cycles.
<b>Concentration</b>	50 µg/mL as determined by BCA
<b>Storage Buffer</b>	100 mM glycine, 25 mM Tris-HCl, pH 7.3.
<b>GENE INFORMATION</b>	
<b>Gene Name</b>	GJA8 gap junction protein alpha 8 [ Homo sapiens (human) ]
<b>Official Symbol</b>	GJA8
<b>Synonyms</b>	GJA8; gap junction protein, alpha 8, 50kDa; CAE, CAE1, CZP1, gap junction protein, alpha 8, 50kD (connexin 50), gap junction protein, alpha 8, 50kDa (connexin 50); gap junction alpha-8 protein; connexin 50; CX50; connexin-50; lens fiber protein MP70; cell surface glycoprotein; lens intrinsic membrane protein MP70; gap junction membrane channel protein alpha-8; CAE; CAE1; CZP1; MP70;
<b>Gene ID</b>	2703
<b>mRNA Refseq</b>	NM_005267
<b>Protein Refseq</b>	NP_005258

 Tel: 1-631-559-9269 1-516-512-3133

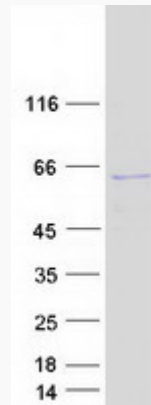
 Email: [info@creative-biomart.com](mailto:info@creative-biomart.com)  Fax: 1-631-938-8127

 45-1 Ramsey Road, Shirley, NY 11967, USA

**MIM** 600897

**UniProt ID** P48165

**SDS-PAGE**



 Tel: 1-631-559-9269 1-516-512-3133

 Email: [info@creative-biomart.com](mailto:info@creative-biomart.com)  Fax: 1-631-938-8127

 45-1 Ramsey Road, Shirley, NY 11967, USA