

## Recombinant Human GJA8 Protein, GST-tagged

Cat. No. GJA8-4924H Lot. No. (See product label)

### SPECIFICATION

<b>Product Overview</b>	Human GJA8 full-length ORF ( AAI46508.1, 1 a.a. - 433 a.a.) recombinant protein with GST-tag at N-terminal.
<b>Species</b>	Human
<b>Source</b>	Wheat Germ
<b>Description</b>	This gene encodes a transmembrane connexin protein that is necessary for lens growth and maturation of lens fiber cells. The encoded protein is a component of gap junction channels and functions in a calcium and pH-dependent manner. Mutations in this gene have been associated with zonular pulverulent cataracts, nuclear progressive cataracts, and cataract-microcornea syndrome. [provided by RefSeq, Dec 2009]
<b>Molecular Mass</b>	74.58 kDa
<b>AA Sequence</b>	MGDWSFLGNILEEVNEHSTVIGRVWLTVLFIFRILILGTAAEFVWGDEQSDFCNTQQ PGCENVCYDEAFPISHIRLWVLQIIFVSTPSLMYVGHAVHYVRMEEKRKSREAELG QQAGTNGGPDQGSVKKSSGSKGTTKFRLEGTLRITYICHIIIFKTLFEVGFIVGHYFLY GFRILPLYRCSRWPCPNVDCFVSRPTEKTIFILFMLSVASVSLFLNVMELGHLGLKG IRSALKRPVEQPLGEIPEKSLHSIAVSSIQKAKGYQLLEEEKIVSHYFPLTEVGMVETS PLPAKPFNQFEKISTGPLGDLSRGYQETLPSYAQVGAQEVEGEGPPAEEGAPEV GEKKEEAERLTTEEQEKVAVPEGEKVETPGVDKEGEKEEPQSEKVSQGLPAEKT SLCPELTDDARPLSRLSKASSRARSDDLTV

 Tel: 1-631-559-9269 1-516-512-3133

 Email: [info@creative-biomart.com](mailto:info@creative-biomart.com)  Fax: 1-631-938-8127

 45-1 Ramsey Road, Shirley, NY 11967, USA

<b>Applications</b>	<p>Enzyme-linked Immunoabsorbent Assay</p> <p>Western Blot (Recombinant protein)</p> <p>Antibody Production</p> <p>Protein Array</p>
<b>Notes</b>	Best use within three months from the date of receipt of this protein.
<b>Storage</b>	Store at -80 centigrade. Aliquot to avoid repeated freezing and thawing.
<b>Storage Buffer</b>	50 mM Tris-HCl, 10 mM reduced Glutathione, pH=8.0 in the elution buffer.
<b>GENE INFORMATION</b>	
<b>Gene Name</b>	GJA8 gap junction protein, alpha 8, 50kDa [ Homo sapiens ]
<b>Official Symbol</b>	GJA8
<b>Synonyms</b>	GJA8; gap junction protein, alpha 8, 50kDa; CAE, CAE1, CZP1, gap junction protein, alpha 8, 50kD (connexin 50), gap junction protein, alpha 8, 50kDa (connexin 50); gap junction alpha-8 protein; connexin 50; CX50; connexin-50; lens fiber protein MP70; cell surface glycoprotein; lens intrinsic membrane protein MP70; gap junction membrane channel protein alpha-8; CAE; CAE1; CZP1; MP70;
<b>Gene ID</b>	2703
<b>mRNA Refseq</b>	NM_005267
<b>Protein Refseq</b>	NP_005258
<b>MIM</b>	600897

 Tel: 1-631-559-9269 1-516-512-3133

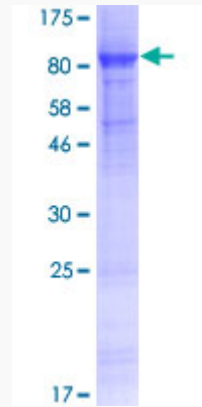
 Email: [info@creative-biomart.com](mailto:info@creative-biomart.com)  Fax: 1-631-938-8127

 45-1 Ramsey Road, Shirley, NY 11967, USA

UniProt ID

P48165

Quality Control  
Testing



12.5% SDS-PAGE Stained with Coomassie Blue.

 Tel: 1-631-559-9269 1-516-512-3133

 Email: [info@creative-biomart.com](mailto:info@creative-biomart.com)  Fax: 1-631-938-8127

 45-1 Ramsey Road, Shirley, NY 11967, USA