

Recombinant Human GJB2 Protein, GST-tagged

Cat. No. GJB2-4928H Lot. No. (See product label)

SPECIFICATION

Product Overview	Human GJB2 full-length ORF (AAH17048, 1 a.a. - 226 a.a.) recombinant protein with GST-tag at N-terminal.
Species	Human
Source	Wheat Germ
Description	This gene encodes a member of the gap junction protein family. The gap junctions were first characterized by electron microscopy as regionally specialized structures on plasma membranes of contacting adherent cells. These structures were shown to consist of cell-to-cell channels that facilitate the transfer of ions and small molecules between cells. The gap junction proteins, also known as connexins, purified from fractions of enriched gap junctions from different tissues differ. According to sequence similarities at the nucleotide and amino acid levels, the gap junction proteins are divided into two categories, alpha and beta. Mutations in this gene are responsible for as much as 50% of pre-lingual, recessive deafness. [provided by RefSeq
Molecular Mass	50.6 kDa
AA Sequence	MDWGTLQTLGGVNHSTSIGKIWLTVLFIFRIMILVVAAKEVWGDEQADFVCNTLQP GCKNVCYDHYFPISHIRLWALQLIFVSTPALLVAMHVAYRRHEKKRKFGEIKSEFK DIEEIKTQKVRIEGLWWTYTSSIFFRVIFEAAFMYVFYVMYDGFMSQRLVKCNAWP CPNTVDCFVSRPTEKTVFTVFMIASGICILLNVTCLCYLLIRYCSGKSKKPV
Applications	Enzyme-linked Immunoabsorbent Assay

 Tel: 1-631-559-9269 1-516-512-3133

 Email: info@creative-biomart.com  Fax: 1-631-938-8127

 45-1 Ramsey Road, Shirley, NY 11967, USA

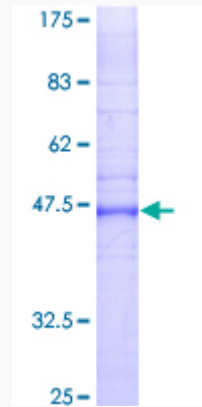
	Western Blot (Recombinant protein) Antibody Production Protein Array
Notes	Best use within three months from the date of receipt of this protein.
Storage	Store at -80 centigrade. Aliquot to avoid repeated freezing and thawing.
Storage Buffer	50 mM Tris-HCl, 10 mM reduced Glutathione, pH=8.0 in the elution buffer.
GENE INFORMATION	
Gene Name	GJB2 gap junction protein, beta 2, 26kDa [Homo sapiens]
Official Symbol	GJB2
Synonyms	GJB2; gap junction protein, beta 2, 26kDa; DFNA3, DFNB1, gap junction protein, beta 2, 26kD (connexin 26), gap junction protein, beta 2, 26kDa (connexin 26); gap junction beta-2 protein; connexin 26; CX26; NSRD1; HID; KID; PPK; DFNA3; DFNB1; DFNA3A; DFNB1A;
Gene ID	2706
mRNA Refseq	NM_004004
Protein Refseq	NP_003995
MIM	121011
UniProt ID	P29033

 Tel: 1-631-559-9269 1-516-512-3133

 Email: info@creative-biomart.com  Fax: 1-631-938-8127

 45-1 Ramsey Road, Shirley, NY 11967, USA

**Quality Control
Testing**



12.5% SDS-PAGE Stained with Coomassie Blue.

 Tel: 1-631-559-9269 1-516-512-3133

 Email: info@creative-biomart.com  Fax: 1-631-938-8127

 45-1 Ramsey Road, Shirley, NY 11967, USA