

Recombinant Human GJB3 Protein (Cys211-Pro269), N-GST tagged

Cat. No. GJB3-2610H Lot. No. (See product label)

SPECIFICATION

Product Overview	Recombinant human GJB3 (Cys211-Pro269) protein fused with the N-GST tag was expressed in E. coli.
Species	Human
Source	E.coli
ProteinLength	Cys211-Pro269
Description	<p>This gene is a member of the connexin gene family. The encoded protein is a component of gap junctions, which are composed of arrays of intercellular channels that provide a route for the diffusion of low molecular weight materials from cell to cell. Mutations in this gene can cause non-syndromic deafness or erythrokeratoderma variabilis, a skin disorder. Alternative splicing results in multiple transcript variants encoding the same protein.</p>
Molecular Mass	33.08 kDa
Purity	>90 % as determined by SDS-PAGE.
Notes	For research use only.
Storage	Use a manual defrost freezer and avoid repeated freeze thaw cycles. Store at 2 to 8 centigrade for one week. Store at -20 to -80 centigrade for twelve months from the

 Tel: 1-631-559-9269 1-516-512-3133

 Email: info@creative-biomart.com  Fax: 1-631-938-8127

 45-1 Ramsey Road, Shirley, NY 11967, USA

	date of receipt.
Storage Buffer	0.01M PBS, pH 7.4, 0.02 % NLS
Reconstitution	Reconstitute in sterile water for a stock solution.
Shipping	In general, proteins are provided as lyophilized powder/frozen liquid. They are shipped out with dry ice/blue ice unless customers require otherwise.

GENE INFORMATION

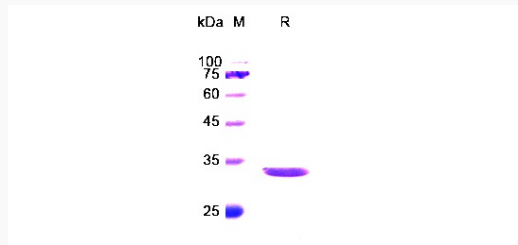
Gene Name	GJB3 gap junction protein, beta 3, 31kDa [Homo sapiens (human)]
Official Symbol	GJB3
Synonyms	GJB3; gap junction protein, beta 3, 31kDa; DFNA2, EKV, erythrokeratoderma variabilis, gap junction protein, beta 3, 31kD (connexin 31), gap junction protein, beta 3, 31kDa (connexin 31); gap junction beta-3 protein; connexin 31; CX31; connexin-31; EKV; DFNA2; DFNA2B; FLJ22486; MGC102938;
Gene ID	2707
mRNA Refseq	NM_001005752
Protein Refseq	NP_001005752
MIM	603324
UniProt ID	O75712

 Tel: 1-631-559-9269 1-516-512-3133

 Email: info@creative-biomart.com  Fax: 1-631-938-8127

 45-1 Ramsey Road, Shirley, NY 11967, USA

SDS-PAGE



 Tel: 1-631-559-9269 1-516-512-3133

 Email: info@creative-biomart.com  Fax: 1-631-938-8127

 45-1 Ramsey Road, Shirley, NY 11967, USA