

Recombinant Human GJB5 Protein, GST-tagged

Cat. No. GJB5-4932H Lot. No. (See product label)

SPECIFICATION

Product Overview	Human GJB5 full-length ORF (AAH04379, 1 a.a. - 273 a.a.) recombinant protein with GST-tag at N-terminal.
Species	Human
Source	Wheat Germ
Description	Gap junctions are conduits that allow the direct cell-to-cell passage of small cytoplasmic molecules, including ions, metabolic intermediates, and second messengers, and thereby mediate intercellular metabolic and electrical communication. Gap junction channels consist of connexin protein subunits, which are encoded by a multigene family.[supplied by OMIM
Molecular Mass	55.77 kDa
AA Sequence	MNWSIFEGLLSGV NKYSTAFGR IWL SLV FIFRVLVYLVT AERVWSDDHKDFDCNTRQ PGCSNVCFDEFFPVSHVRLWALQLILVTCP SLLVVMHVAYREVQEKRHREAHGENS GRLYLNPGKKRGGLWWTYVCSLVFKASVDIAFLYVFHSFY PKYILPPVVKCHADPCP NIVDCFISKPSEKNIFTLFMVATAAICILLNLVELIYLVSKRCHECLAARKAQAMCTGHH PHGTTSSCKQDDLLSGDLIFLGSDSH PPLL PDRPRDHVKKTIL
Applications	Enzyme-linked Immunoabsorbent Assay Western Blot (Recombinant protein) Antibody Production Protein Array

 Tel: 1-631-559-9269 1-516-512-3133

 Email: info@creative-biomart.com  Fax: 1-631-938-8127

 45-1 Ramsey Road, Shirley, NY 11967, USA

Notes	Best use within three months from the date of receipt of this protein.
Storage	Store at -80 centigrade. Aliquot to avoid repeated freezing and thawing.
Storage Buffer	50 mM Tris-HCl, 10 mM reduced Glutathione, pH=8.0 in the elution buffer.

GENE INFORMATION

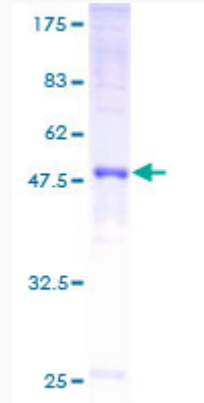
Gene Name	GJB5 gap junction protein, beta 5, 31.1kDa [Homo sapiens]
Official Symbol	GJB5
Synonyms	GJB5; gap junction protein, beta 5, 31.1kDa; gap junction protein, beta 5, gap junction protein, beta 5 (connexin 31.1); gap junction beta-5 protein; connexin 31.1; CX31.1; connexin-31.1; gap junction protein, beta 5 (connexin 31.1);
Gene ID	2709
mRNA Refseq	NM_005268
Protein Refseq	NP_005259
MIM	604493
UniProt ID	O95377

 Tel: 1-631-559-9269 1-516-512-3133

 Email: info@creative-biomart.com  Fax: 1-631-938-8127

 45-1 Ramsey Road, Shirley, NY 11967, USA

**Quality Control
Testing**



12.5% SDS-PAGE Stained with Coomassie Blue.

 Tel: 1-631-559-9269 1-516-512-3133

 Email: info@creative-biomart.com  Fax: 1-631-938-8127

 45-1 Ramsey Road, Shirley, NY 11967, USA