

Recombinant Human GK Protein, Myc/DDK-tagged, C13 and N15-labeled

Cat. No. GK-4308H **Lot. No.** (See product label)

SPECIFICATION

Product Overview	GK MS Standard C13 and N15-labeled recombinant protein (NP_976325) with a C-terminal MYC/DDK tag, was expressed in HEK293 cells.
Species	Human
Source	HEK293
Description	<p>The protein encoded by this gene belongs to the FGGY kinase family. This protein is a key enzyme in the regulation of glycerol uptake and metabolism. It catalyzes the phosphorylation of glycerol by ATP, yielding ADP and glycerol-3-phosphate. Mutations in this gene are associated with glycerol kinase deficiency (GKD). Alternatively spliced transcript variants encoding different isoforms have been found for this gene.</p>
Molecular Mass	58.2 kDa
AA Sequence	<p>MAASKKAVLGPLVGAVDQGTSSSTRFLVFNSKTAELLSHHQVEIKQEFPREGWVEQD PKEILHSVYECIEKTCEKLGQLKIDISNIKAIGVSNQRETTVVWDKITGEPLYNAVVWL DLRTQSTVESLSKRITGNNNFVKSKTGLPLSTYFSAVKLRWLLDNVRKVQKAVEEKR ALFGTIDSWLIWSLTGGVNGGVHCTDVTNASRTMLFNIHSLEWDKQLCEFFGIPMEIL PNVRSSEIYGLMKISHSVKAGALEGVPISGCLGDQSAALVGQMCFQIGQAKNTYGT GCFLLCNTGHKCVFSDHGLLTTVAYKLRDKPVYYALEGSVAIAGAVIRWLRDNLGII KTSEEIEKLAKEVGTSYGCYFVPAFSGLYAPYWEPSARGIICGLTQFTNKCHIAFAAL</p>

 Tel: 1-631-559-9269 1-516-512-3133

 Email: info@creative-biomart.com  Fax: 1-631-938-8127

 45-1 Ramsey Road, Shirley, NY 11967, USA

EAVCFQTREILDAMNRDCGIPLSHLQVDGGMTSNKILMQLQADILYIPVVKPSMPETT
 ALGAAMAAGAAEGVGVWSLEPEDLSAVTMERFEPQINAESEIRYSTWKKAVMKS
 MGWVTTQSPESGIPTTRTRPLEQKLISEEDLAANDILDYKDDDDKV

Purity > 80% as determined by SDS-PAGE and Coomassie blue staining

Stability Stable for 3 months from receipt of products under proper storage and handling conditions.

Storage Store at -80 centigrade. Avoid repeated freeze-thaw cycles.

Concentration 50 µg/mL as determined by BCA

Storage Buffer 100 mM glycine, 25 mM Tris-HCl, pH 7.3.

GENE INFORMATION

Gene Name GK glycerol kinase [Homo sapiens (human)]

Official Symbol GK

Synonyms GK; glycerol kinase; GK1; GKD; glycerol kinase; ATP:glycerol 3-phosphotransferase; glycerokinase; EC 2.7.1.30

Gene ID 2710

mRNA Refseq NM_203391

Protein Refseq NP_976325

MIM 300474

 Tel: 1-631-559-9269 1-516-512-3133

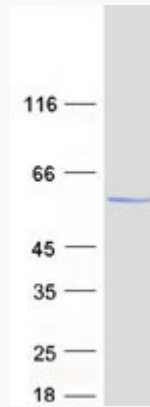
 Email: info@creative-biomart.com  Fax: 1-631-938-8127

 45-1 Ramsey Road, Shirley, NY 11967, USA

UniProt ID

B4DH54

SDS-PAGE



 Tel: 1-631-559-9269 1-516-512-3133

 Email: info@creative-biomart.com  Fax: 1-631-938-8127

 45-1 Ramsey Road, Shirley, NY 11967, USA