

# Recombinant Human GK Protein, Myc/DDK-tagged, C13 and N15-labeled

**Cat. No.** GK-4805H    **Lot. No.** (See product label)

## SPECIFICATION

### Product Overview

GK MS Standard C13 and N15-labeled recombinant protein (NP\_000158) with a C-terminal MYC/DDK tag, was expressed in HEK293 cells.

### Species

Human

### Source

HEK293

### Description

The protein encoded by this gene belongs to the FGGY kinase family. This protein is a key enzyme in the regulation of glycerol uptake and metabolism. It catalyzes the phosphorylation of glycerol by ATP, yielding ADP and glycerol-3-phosphate. Mutations in this gene are associated with glycerol kinase deficiency (GKD). Alternatively spliced transcript variants encoding different isoforms have been found for this gene.

### Molecular Mass

57.3 kDa

### AA Sequence

MAASKKAVLGPLVGAVDQGTSSSTRFLVFNSKTAELLSHHQVEIKQEFPREGWVEQD  
 PKEILHSVYECIEKTCEKLGQLNIDISNIKAIGVSNQRETTVVWDKITGEPLYNAVVWL  
 DLRTQSTVESLSKRIPGNNNFVKSKTGLPLSTYFSAVKLRWLLDNVRKVQKAVEEKR  
 ALFGTIDSWLIWSLTGGVNGGVHCTDVTNASRTMLFNIHSLEWDKQLCEFFGIPMEIL  
 PNVRSSSEIYGLMKAGALEGVPISGCLGDQSAALVGQMCFQIGQAKNTYGTGCFLL  
 CNTGHKCVFSDHGLLTTVAYKLRDVKPVVYALEGSVAIAGAVIRWLRDNLGIIKTSEE  
 IEKLAKEVGTSYGCFVPAFSGLYAPYWEPSARGIICGLTQFTNKCHIAFAALEAVCF

 Tel: 1-631-559-9269    1-516-512-3133

 Email: [info@creative-biomart.com](mailto:info@creative-biomart.com)     Fax: 1-631-938-8127

 45-1 Ramsey Road, Shirley, NY 11967, USA

QTREILDAMNRDCGIPLSHLQVDGGMTSNKILMQLQADILYIPVVKPSMPETTALGAA  
 MAAGAAEGVGVWSLEPEDLSAVTMERFEPQINAESEIRYSTWKKAVMKSMGWVT  
 TQSPESGIPTRTRPLEQKLISEEDLAANDILDYKDDDDKV

**Purity** > 80% as determined by SDS-PAGE and Coomassie blue staining

**Stability** Stable for 3 months from receipt of products under proper storage and handling conditions.

**Storage** Store at -80 centigrade. Avoid repeated freeze-thaw cycles.

**Concentration** 50 µg/mL as determined by BCA

**Storage Buffer** 100 mM glycine, 25 mM Tris-HCl, pH 7.3.

## GENE INFORMATION

**Gene Name** GK glycerol kinase [ *Homo sapiens* (human) ]

**Official Symbol** GK

**Synonyms** GK; glycerol kinase; GK1; GKD; glycerol kinase; ATP:glycerol 3-phosphotransferase; glycerokinase; EC 2.7.1.30

**Gene ID** 2710

**mRNA Refseq** NM\_000167

**Protein Refseq** NP\_000158

**MIM** 300474

 Tel: 1-631-559-9269 1-516-512-3133

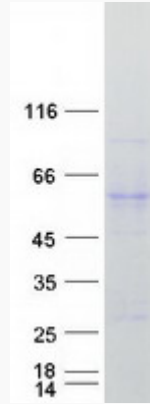
 Email: [info@creative-biomart.com](mailto:info@creative-biomart.com)  Fax: 1-631-938-8127

 45-1 Ramsey Road, Shirley, NY 11967, USA

UniProt ID

B4DH54

SDS-PAGE



 Tel: 1-631-559-9269 1-516-512-3133

 Email: [info@creative-biomart.com](mailto:info@creative-biomart.com)  Fax: 1-631-938-8127

 45-1 Ramsey Road, Shirley, NY 11967, USA