

## Recombinant Human GK Protein, GST-tagged

Cat. No. GK-4936H Lot. No. (See product label)

### SPECIFICATION

<b>Product Overview</b>	Human GK full-length ORF ( AAH37549, 1 a.a. - 524 a.a.) recombinant protein with GST-tag at N-terminal.
<b>Species</b>	Human
<b>Source</b>	Wheat Germ
<b>Description</b>	The product of this gene belongs to the FGGY kinase family of proteins and encodes glycerol kinase. Glycerol kinase is a key enzyme in the regulation of glycerol uptake and metabolism. It catalyzes the phosphorylation of glycerol by ATP, yielding ADP and glycerol-3-phosphate. Defects in this gene are the cause of glycerol kinase deficiency (GKD). Alternatively spliced transcript variants encoding different isoforms have been identified. [provided by RefSeq]
<b>Molecular Mass</b>	83.38 kDa
<b>AA Sequence</b>	MAASKKAVLGPLVGAVDQGTSSSTRFLVFNSKTAELLSHHQVEIKQEFPREGWVEQD PKEILHSVYECIEKTCEKLGQLNIDISNIKAIGVSNQRETTVVWDKITGEPLYNAVVWL DLRTQSTVESLSKRIPGNNNFVKSKTGLPLSTYFSAVKLRWLLDNVRKVQKAVEEKR ALFGTIDSWLIWLSLTGGVNGGVHCTDVTNASRTMLFNIHSLEWDKQLCEFFGIPMEIL PNVRSSEIYGLMKAGALEGVPISGCLGDQSAALVGQMCQFQIGQAKNTYGTGCFLL CNTGHKCVFSDHGLLTTVAYKLGRDKPVYYALEGSVAIAGAVIRWLRDNLGIIKTSEE IEKLAKEVGTSYGCYFVPAFSGLYAPYWEPSARGIICGLTQFTNKCHIAFAALEAVCF QTREILDAMNRDCGIPLSHLQVDGGMTSNKILMQLQADILYIPVVKPSMPETTALGAA

 Tel: 1-631-559-9269 1-516-512-3133

 Email: [info@creative-biomart.com](mailto:info@creative-biomart.com)  Fax: 1-631-938-8127

 45-1 Ramsey Road, Shirley, NY 11967, USA

MAAGAAEGVGVWSLEPEDLSAVTMERFEPQINAESEIRYSTWKKAVMKSMGWVT  
TQSPESGIP

<b>Applications</b>	Enzyme-linked Immunoabsorbent Assay Western Blot (Recombinant protein) Antibody Production Protein Array
<b>Notes</b>	Best use within three months from the date of receipt of this protein.
<b>Storage</b>	Store at -80 centigrade. Aliquot to avoid repeated freezing and thawing.
<b>Storage Buffer</b>	50 mM Tris-HCl, 10 mM reduced Glutathione, pH=8.0 in the elution buffer.

## GENE INFORMATION

<b>Gene Name</b>	GK glycerol kinase [ Homo sapiens ]
<b>Official Symbol</b>	GK
<b>Synonyms</b>	glycerol kinase; 4289; Ensembl:ENSG00000198814; glycerol kinase;glycerokinase;ATP:glycerol 3-phosphotransferase; 2.7.1.30; GK1; GKD
<b>Gene ID</b>	2710
<b>mRNA Refseq</b>	NM_000167
<b>Protein Refseq</b>	NP_000158
<b>MIM</b>	300474

 Tel: 1-631-559-9269 1-516-512-3133

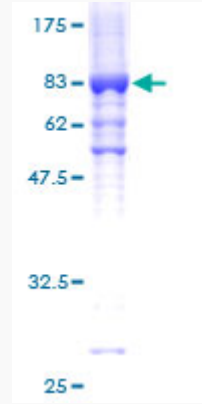
 Email: [info@creative-biomart.com](mailto:info@creative-biomart.com)  Fax: 1-631-938-8127

 45-1 Ramsey Road, Shirley, NY 11967, USA

UniProt ID

B4DH54

Quality Control  
Testing



12.5% SDS-PAGE Stained with Coomassie Blue.

 Tel: 1-631-559-9269 1-516-512-3133

 Email: [info@creative-biomart.com](mailto:info@creative-biomart.com)  Fax: 1-631-938-8127

 45-1 Ramsey Road, Shirley, NY 11967, USA