

# Recombinant Human GKAP1 Protein, Myc/DDK-tagged, C13 and N15-labeled

Cat. No. GKAP1-3180H Lot. No. (See product label)

## SPECIFICATION

<b>Product Overview</b>	GKAP1 MS Standard C13 and N15-labeled recombinant protein (NP_079487) with a C-terminal MYC/DDK tag, was expressed in HEK293 cells.
<b>Species</b>	Human
<b>Source</b>	HEK293
<b>Description</b>	This gene encodes a protein that is highly similar to the mouse cGMP-dependent protein kinase anchoring protein 42kDa. The mouse protein has been found to localize with the Golgi and recruit cGMP-dependent protein kinase I alpha to the Golgi in mouse testes. It is thought to play a role in germ cell development. Transcript variants encoding different isoforms have been found for this gene.
<b>Molecular Mass</b>	42.1 kDa
<b>AA Sequence</b>	MASAVLSSVPTTASRFALLQVDSGSGSDSEPGKKGKRNTGKSQTLGSKSTTNEKK REKRRKKKEQQQSEANELRNLAFFKIPQKSSHAVCNAQHDLPLSNPVQKDSREEN WQEWQRDEQLTSEMFEADLEKALLSKLEYEEHKKKEYEDAENTSTQSKVMNKKD KRKNHQGKDRPLTVSLKDFHSEDHISKKTEELSSSQTLSDGGFFNRLEDDVHKILIR EKRRQLTEYNGTDNCTAHEHNQEVVLKDGRIERLKLLELRKDAEIQKLNKVNITQWE AKYKEVKARNAQLLKMLQEGEMKDKAEILLQVDESQSIKNELTIQVTSLHAALEQERS KVKVLQAELAKYQGGGRKGRNSESDQCRTTRTRPLEQKLISEEDLAANDILDYKDDD DKV

 Tel: 1-631-559-9269 1-516-512-3133

 Email: [info@creative-biomart.com](mailto:info@creative-biomart.com)  Fax: 1-631-938-8127

 45-1 Ramsey Road, Shirley, NY 11967, USA

<b>Purity</b>	> 80% as determined by SDS-PAGE and Coomassie blue staining
<b>Stability</b>	Stable for 3 months from receipt of products under proper storage and handling conditions.
<b>Storage</b>	Store at -80 centigrade. Avoid repeated freeze-thaw cycles.
<b>Concentration</b>	50 µg/mL as determined by BCA
<b>Storage Buffer</b>	100 mM glycine, 25 mM Tris-HCl, pH 7.3.

## GENE INFORMATION

<b>Gene Name</b>	GKAP1 G kinase anchoring protein 1 [ Homo sapiens (human) ]
<b>Official Symbol</b>	GKAP1
<b>Synonyms</b>	GKAP1; G kinase anchoring protein 1; G kinase-anchoring protein 1; cGMP dependent protein kinase anchoring protein 42kDa; FKSG21; GKAP42; protein kinase anchoring protein GKAP42; cGMP-dependent protein kinase anchoring protein 42kDa; cGMP-dependent protein kinase-anchoring protein of 42 kDa; FLJ25469;
<b>Gene ID</b>	80318
<b>mRNA Refseq</b>	NM_025211
<b>Protein Refseq</b>	NP_079487
<b>MIM</b>	611356
<b>UniProt ID</b>	Q5VSY0

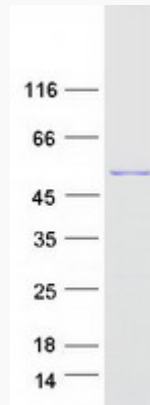
 Tel: 1-631-559-9269 1-516-512-3133

 Email: [info@creative-biomart.com](mailto:info@creative-biomart.com)  Fax: 1-631-938-8127

 45-1 Ramsey Road, Shirley, NY 11967, USA



SDS-PAGE



Tel: 1-631-559-9269 1-516-512-3133

Email: [info@creative-biomart.com](mailto:info@creative-biomart.com) Fax: 1-631-938-8127

45-1 Ramsey Road, Shirley, NY 11967, USA