

Recombinant Human GKN1 protein, His-tagged

Cat. No. GKN1-5454H Lot. No. (See product label)

SPECIFICATION

Product Overview	Recombinant Human GKN1 protein(Q9NS71)(35-199aa), fused with C-terminal His tag, was expressed in HEK293.
Species	Human
Source	HEK293
ProteinLength	35-199aa
Tag	C-His
Form	If the delivery form is liquid, the default storage buffer is Tris/PBS-based buffer, 5%-50% glycerol. If the delivery form is lyophilized powder, the buffer before lyophilization is Tris/PBS-based buffer, 6% Trehalose, pH 8.0.
Molecular Mass	20.5 kDa
Purity	Greater than 90% as determined by SDS-PAGE. Greater than 90% as determined by SEC-HPLC.
Storage	Store at -20°C/-80°C upon receipt, aliquoting is necessary for mutiple use. Avoid repeated freeze-thaw cycles.
Reconstitution	We recommend that this vial be briefly centrifuged prior to opening to bring the contents to the bottom. Please reconstitute protein in deionized sterile water to a

 Tel: 1-631-559-9269 1-516-512-3133

 Email: info@creative-biomart.com  Fax: 1-631-938-8127

 45-1 Ramsey Road, Shirley, NY 11967, USA

concentration of 0.1-1.0 mg/mL. We recommend to add 5-50% of glycerol (final concentration) and aliquot for long-term storage at -20°C/-80°C.

AA Sequence
 NYNINVNDNNDNNAGSGQQSVSVNNEHNVANVDNNGWDSWNSIWDYGNGFAATR
 LFQKKTICIVHKMNKEVMPSIQSLDALVKEKKLQGKGGPPPKGLMYSVNPKNVDD
 LSKFGKNIANMCRGIPTYMAEEMQEASLFFYSGTCYTTSVLWIVDISFCGDTVEN

GENE INFORMATION

Gene Name [GKN1 gastrokine 1 \[Homo sapiens \]](#)

Official Symbol [GKN1](#)

Synonyms [GKN1](#); [gastrokine 1](#); [gastrokine-1](#); [AMP18](#); [BRICD1](#); [CA11](#); [AMP-18](#); [BRICHOS domain containing 1](#); [18 kDa antrum mucosa protein](#); [FOV](#); [foveolin](#); [MGC70354](#);

Gene ID [56287](#)

mRNA Refseq [NM_019617](#)

Protein Refseq [NP_062563](#)

MIM [606402](#)

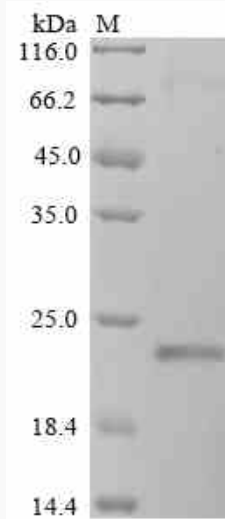
UniProt ID [Q9NS71](#)

 Tel: 1-631-559-9269 1-516-512-3133

 Email: info@creative-biomart.com  Fax: 1-631-938-8127

 45-1 Ramsey Road, Shirley, NY 11967, USA

SDS-PAGE



 Tel: 1-631-559-9269 1-516-512-3133

 Email: info@creative-biomart.com  Fax: 1-631-938-8127

 45-1 Ramsey Road, Shirley, NY 11967, USA