

Recombinant Human GLA Protein, Myc/DDK-tagged, C13 and N15-labeled

Cat. No. GLA-1509H **Lot. No.** (See product label)

SPECIFICATION

Product Overview	GLA MS Standard C13 and N15-labeled recombinant protein (NP_000160) with a C-terminal MYC/DDK tag, was expressed in HEK293 cells.
Species	Human
Source	HEK293
Description	This gene encodes a homodimeric glycoprotein that hydrolyses the terminal alpha-galactosyl moieties from glycolipids and glycoproteins. This enzyme predominantly hydrolyzes ceramide trihexoside, and it can catalyze the hydrolysis of melibiose into galactose and glucose. A variety of mutations in this gene affect the synthesis, processing, and stability of this enzyme, which causes Fabry disease, a rare lysosomal storage disorder that results from a failure to catabolize alpha-D-galactosyl glycolipid moieties.
Molecular Mass	48.8 kDa
AA Sequence	MQLRNPELHLGCALALRFLALVSWDIPGARALDNGLARTPTMGWLHWERFMCNLD CQEEDSCISEKLFMEMAELMVSEGWKDAGYEYLCIDDCWMAPQRDSEGRLQADP QRFPHGIRQLANYVHSGKLGKLGVIYADVGNKTCAGFPGSFGYYDIDAQTFADWGVDL LKFDGICYCDLENLADGYKHMSLALNRTGRSIVYSCEWPLYMWPFKPNYTEIRQY CNHWRNFADIDDSWKSISILDWTSFNQERIVDVAGPGGWNDPMLVIGNFGLSWN QQVTQMALWAIMAAPLFMSNDLRHISPQAKALLQDKDVIINQDPLGKQGYQLRQG

 Tel: 1-631-559-9269 1-516-512-3133

 Email: info@creative-biomart.com  Fax: 1-631-938-8127

 45-1 Ramsey Road, Shirley, NY 11967, USA

DNFEVWERPLSGLAWAVAMINRQEIGGPRSYTIAVASLGKGVACNPACFITQLLPVK
 RKLGFYEWTSRLRSHINPTGTVLLQLENTMQMSLKDLLTRTRPLEQKLISEEDLAAN
 DILDYKDDDDKV

Purity > 80% as determined by SDS-PAGE and Coomassie blue staining

Stability Stable for 3 months from receipt of products under proper storage and handling conditions.

Storage Store at -80 centigrade. Avoid repeated freeze-thaw cycles.

Concentration 50 µg/mL as determined by BCA

Storage Buffer 100 mM glycine, 25 mM Tris-HCl, pH 7.3.

GENE INFORMATION

Gene Name [GLA galactosidase alpha \[Homo sapiens \(human\) \]](#)

Official Symbol [GLA](#)

Synonyms GLA; galactosidase, alpha; alpha-galactosidase A; GALA; melibiase; alpha-gal A; agalsidase alfa; alpha-D-galactosidase A; alpha-D-galactoside galactohydrolase 1;

Gene ID [2717](#)

mRNA Refseq [NM_000169](#)

Protein Refseq [NP_000160](#)

MIM [300644](#)

 Tel: 1-631-559-9269 1-516-512-3133

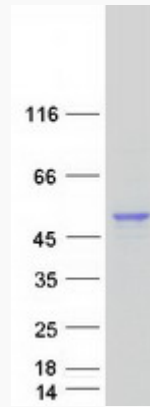
 Email: info@creative-biomart.com  Fax: 1-631-938-8127

 45-1 Ramsey Road, Shirley, NY 11967, USA

UniProt ID

P06280

SDS-PAGE



 Tel: 1-631-559-9269 1-516-512-3133

 Email: info@creative-biomart.com  Fax: 1-631-938-8127

 45-1 Ramsey Road, Shirley, NY 11967, USA