

Recombinant Full Length Human GLA Protein, C-Flag-tagged

Cat. No. GLA-1628HFL Lot. No. (See product label)

SPECIFICATION

Product Overview	Recombinant Full Length Human GLA Protein, fused to Flag-tag at C-terminus, was expressed in Mammalian cells.
Species	Human
Source	Mammalian Cells
Description	This gene encodes a homodimeric glycoprotein that hydrolyses the terminal alpha-galactosyl moieties from glycolipids and glycoproteins. This enzyme predominantly hydrolyzes ceramide trihexoside, and it can catalyze the hydrolysis of melibiose into galactose and glucose. A variety of mutations in this gene affect the synthesis, processing, and stability of this enzyme, which causes Fabry disease, a rare lysosomal storage disorder that results from a failure to catabolize alpha-D-galactosyl glycolipid moieties.
Form	25 mM Tris HCl, pH 7.3, 100 mM glycine, 10% glycerol.
Molecular Mass	45.3 kDa
AA Sequence	MQLRNPELHLGCALALRFLALVSWDIPGARALDNGLARTPTMGWLHWERFMCNLD CQEEDSCISEKLFM EMAELMVSEGWKDAGYEYLCIDDCWMAPQRDSEGRLQAD PQRFPHGIRQLANYVHSKGLKLGİYADVGNK TCAGFPGSFGYYDIDAQTFADWGVD LLKFDGCYCDLENLADGYKHMSLALNRTGRSIVYSCEWPLYMWP FQKPNYTEIRQ YCNHWRNFADIDDSWKSISILDWTSFNQERIVDVAGPGGWNDPDMVLIGNFGLSW NQQ VTQMALWAIMAAPLFMSNDLRHISPAKALLQDKDVIINQDPLGKQGYQLRQ

 Tel: 1-631-559-9269 1-516-512-3133

 Email: info@creative-biomart.com  Fax: 1-631-938-8127

 45-1 Ramsey Road, Shirley, NY 11967, USA

GDNFEVWERPLSGLAWA VAMINRQEIGGPRSYTIAVASLGKGVACNPACFITQLLP
 VKRKLGFYEWTSRLRSHINPTGTVLLQLENT
 MQMSLKDLLTRTRPLEQKLISEEDLAANDILDYKDDDDKV

Purity	> 80% as determined by SDS-PAGE and Coomassie blue staining.
Stability	Stable for 12 months from the date of receipt of the product under proper storage and handling conditions. Avoid repeated freeze-thaw cycles.
Storage	Store at -80 centigrade.
Concentration	>50 ug/mL as determined by microplate BCA method.
Preparation	Recombinant protein was captured through anti-DDK affinity column followed by conventional chromatography steps.
Protein Families	Druggable Genome
Protein Pathways	Galactose metabolism, Glycerolipid metabolism, Glycosphingolipid biosynthesis - globo series, Lysosome, Sphingolipid metabolism
Full Length	Full L.

GENE INFORMATION

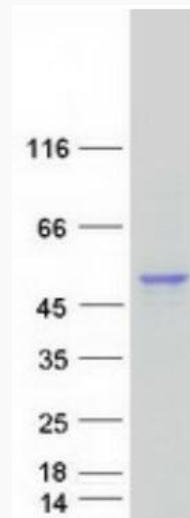
Gene Name	GLA galactosidase alpha [Homo sapiens (human)]
Official Symbol	GLA
Synonyms	GALA

 Tel: 1-631-559-9269 1-516-512-3133

 Email: info@creative-biomart.com  Fax: 1-631-938-8127

 45-1 Ramsey Road, Shirley, NY 11967, USA

Gene ID	2717
mRNA Refseq	NM_000169.3
Protein Refseq	NP_000160.1
MIM	300644
UniProt ID	P06280



Coomassie blue staining of purified GLA protein.

Tel: 1-631-559-9269 1-516-512-3133

Email: info@creative-biomart.com Fax: 1-631-938-8127

45-1 Ramsey Road, Shirley, NY 11967, USA