

Recombinant Human GLA Protein, GST-tagged

Cat. No. GLA-4944H Lot. No. (See product label)

SPECIFICATION

Product Overview Human GLA full-length ORF (AAH02689, 1 a.a. - 429 a.a.) recombinant protein with GST-tag at N-terminal.

Species Human

Source Wheat Germ

Description This gene encodes a homodimeric glycoprotein that hydrolyses the terminal alpha-galactosyl moieties from glycolipids and glycoproteins. This enzyme predominantly hydrolyzes ceramide trihexoside, and it can catalyze the hydrolysis of melibiose into galactose and glucose. A variety of mutations in this gene affect the synthesis, processing, and stability of this enzyme, which causes Fabry disease, a rare lysosomal storage disorder that results from a failure to catabolize alpha-D-galactosyl glycolipid moieties. [provided by RefSeq]

Molecular Mass 72.93 kDa

AA Sequence

```
MQLRNPELHLGCALALRFLALVSWDIPGARALDNGLARTPTMGWLHWERFMCNLD
CQEEDSCISEKLFMEMAELMVSEGWKDAGYEYLCIDDCWMAPQRDSEGRLQADP
QRFPHGIRQLANYVHSGKGLKLGİYADVGNKTCAGFPGSFGYYDIDAQTFADWGVDL
LKFDGICYCDSLENLADGYKHMSLALNRTGRSIVYSCEWPLYMWPFKPNYTEIRQY
CNHWRNFADIDDSWKSİKSİLDWTSFNQERİVDVAGPGGWNDPDMLVIGNFGLSWN
QQVTQMALWAIMAAPLFMSNDLRHİSPQAKALLQDKDVIINQDPLGKQGYQLRQG
DNFEVWERPLSGLAWAVAMINRQEİGGPRSYTİAVASLGKGVACNPACFITQLLPVK
```

 Tel: 1-631-559-9269 1-516-512-3133

 Email: info@creative-biomart.com  Fax: 1-631-938-8127

 45-1 Ramsey Road, Shirley, NY 11967, USA



RKLGFYEWTSRLRSHINPTGTVLLQLENTMQMSLKDLL

Applications

Enzyme-linked Immunoabsorbent Assay
Western Blot (Recombinant protein)
Antibody Production
Protein Array

Notes

Best use within three months from the date of receipt of this protein.

Storage

Store at -80 centigrade. Aliquot to avoid repeated freezing and thawing.

Storage Buffer

50 mM Tris-HCl, 10 mM reduced Glutathione, pH=8.0 in the elution buffer.

GENE INFORMATION

Gene Name

GLA galactosidase, alpha [Homo sapiens]

Official Symbol

GLA

Synonyms

GLA; galactosidase, alpha; alpha-galactosidase A; GALA; melibiase; alpha-gal A; agalsidase alfa; alpha-D-galactosidase A; alpha-D-galactoside galactohydrolase 1;

Gene ID

2717

mRNA Refseq

NM_000169

Protein Refseq

NP_000160

MIM

300644

UniProt ID

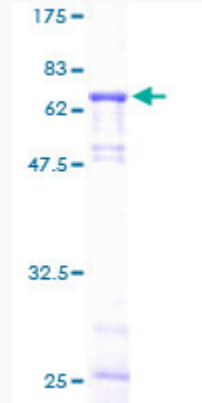
P06280

Tel: 1-631-559-9269 1-516-512-3133

Email: info@creative-biomart.com Fax: 1-631-938-8127

45-1 Ramsey Road, Shirley, NY 11967, USA

**Quality Control
Testing**



12.5% SDS-PAGE Stained with Coomassie Blue.

 Tel: 1-631-559-9269 1-516-512-3133

 Email: info@creative-biomart.com  Fax: 1-631-938-8127

 45-1 Ramsey Road, Shirley, NY 11967, USA