

Recombinant Human GLB1 Protein, Myc/DDK-tagged, C13 and N15-labeled

Cat. No. GLB1-3994H **Lot. No.** (See product label)

SPECIFICATION

Product Overview	GLB1 MS Standard C13 and N15-labeled recombinant protein (NP_001073279) with a C-terminal MYC/DDK tag, was expressed in HEK293 cells.
Species	Human
Source	HEK293
Description	This gene encodes a member of the glycosyl hydrolase 35 family of proteins. Alternative splicing results in multiple transcript variants, at least one of which encodes a preproprotein that is proteolytically processed to generate the mature lysosomal enzyme. This enzyme catalyzes the hydrolysis of a terminal beta-linked galactose residue from ganglioside substrates and other glycoconjugates. Mutations in this gene may result in GM1-gangliosidosis and Morquio B syndrome.
Molecular Mass	76.1 kDa
AA Sequence	MPGFLVRILLVLLVLLGPTRGLRNATQRMFEIDYSRDSFLKDGQPFRYISGSIHYSR VPRFYWKDRLLKMKMAGLNAIQTYVPWNFHEPWPGQYQFSEDHDVEYFLRLAHEL GLLVILRPGPYICAEWEMGGLPAWLLEKESILLRSSDPDYLAAVDKWLGVLLPKMKP LLYQNGGPVITVQVENEYGSYFACDFDYLRFQKFRFRHHLGDDVVLFTTDGAHKFTL KCGALQGLYTTVDFGTGSNITDAFLSQRKCEPKGPLINSEFYTGWLDHWGQPHSTIK TEAVASSLYDILARGASVNLVYMFIGGTNFAYWNGANSPYAAQPTSVDYDAPLSEAG DLTEKYFALRNIIQKFEKVPEGPIPPSTPKFAYGKVTLEKLTVGAALDILCPSPGIKSL

 Tel: 1-631-559-9269 1-516-512-3133

 Email: info@creative-biomart.com  Fax: 1-631-938-8127

 45-1 Ramsey Road, Shirley, NY 11967, USA

YPLTFIQVKQHYGFVLYRRTTLPQDCSNPAPLSSPLNGVHDRAYVAVDGIPQGVLERN
 NVITLNITGKAGATDLLVENMGRVNYGAYINDFKGLVSNLTLSSNILTDWTIFPLDTE
 DAVRSHLGGWGHHRDSGHHDEAWAHNSSNYTLPAFYMGNFSIPSGIPDLPQDTFIQF
 PGWTKGQVWINGFNLGRYWPARGPQLTLFVPQHILMTSAPNTITVLELEWAPCSSD
 DPELCAVTFVDRPVIGSSVTYDHPSPVEKRLMPPPPQKNKDSWLDHVTRTRPLEQ
 KLISEEDLAANDILDYKDDDDKV

Purity	> 80% as determined by SDS-PAGE and Coomassie blue staining
Stability	Stable for 3 months from receipt of products under proper storage and handling conditions.
Storage	Store at -80 centigrade. Avoid repeated freeze-thaw cycles.
Concentration	50 µg/mL as determined by BCA
Storage Buffer	100 mM glycine, 25 mM Tris-HCl, pH 7.3.

GENE INFORMATION

Gene Name	GLB1 galactosidase beta 1 [Homo sapiens (human)]
Official Symbol	GLB1
Synonyms	GLB1; galactosidase, beta 1; elastin receptor 1 (67kD), elastin receptor 1, 67kDa, ELNR1; beta-galactosidase; EBP; lactase; acid beta-galactosidase; elastin receptor 1, 67kDa; ELNR1; MPS4B;
Gene ID	2720
mRNA Refseq	NM_001079811

 Tel: 1-631-559-9269 1-516-512-3133

 Email: info@creative-biomart.com  Fax: 1-631-938-8127

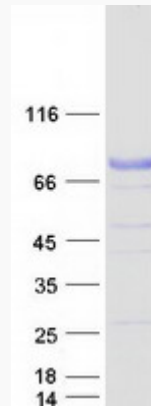
 45-1 Ramsey Road, Shirley, NY 11967, USA

Protein Refseq NP_001073279

MIM 611458

UniProt ID P16278

SDS-PAGE



 Tel: 1-631-559-9269 1-516-512-3133

 Email: info@creative-biomart.com  Fax: 1-631-938-8127

 45-1 Ramsey Road, Shirley, NY 11967, USA