

Recombinant Full Length Human GLB1 Protein, C-Flag-tagged

Cat. No. GLB1-417HFL Lot. No. (See product label)

SPECIFICATION

Product Overview	Recombinant Full Length Human GLB1 Protein, fused to Flag-tag at C-terminus, was expressed in Mammalian cells.
Species	Human
Source	Mammalian Cells
Description	This gene encodes a member of the glycosyl hydrolase 35 family of proteins. Alternative splicing results in multiple transcript variants, at least one of which encodes a preproprotein that is proteolytically processed to generate the mature lysosomal enzyme. This enzyme catalyzes the hydrolysis of a terminal beta-linked galactose residue from ganglioside substrates and other glycoconjugates. Mutations in this gene may result in GM1-gangliosidosis and Morquio B syndrome.
Form	25 mM Tris HCl, pH 7.3, 100 mM glycine, 10% glycerol.
Molecular Mass	75.9 kDa
AA Sequence	MPGFLVRILLLLLVLLLLGPTRGLRNATQRMFEIDYSRDSFLKDGQPFRYISGSIHYSR VPRFYWKDRLL KMKMAGLNAIQTYVPWNFHEPWPGQYQFSEDHDVEYFLRLAHEL GLLVILRPGPYICA EWEMGGLPAWLL EKESILLRSSDPDYLA AVDKWLGVL LPKMKP LLYQNGGPVITVQVENEYGSYFACDFDYLRFLQKRFRHH LGDDVVLFTTDGAHKTF LKCGALQGLYTTVDFGTGSNITDAFLSQRKCEPKGPLINSEFYTGWLDHWGQP HST IKTEAVASSLYDILARGASVNL YMFIGGTNFAYWNGANSPYAAQPTS YDYDAPLSEA GDLTEKYFAL RNIIQKFEKVPEGPIPPSTPKFAYGKVTLEKLTVGAALDILCPSPGIK

 Tel: 1-631-559-9269 1-516-512-3133

 Email: info@creative-biomart.com  Fax: 1-631-938-8127

 45-1 Ramsey Road, Shirley, NY 11967, USA

SLYPLTFIQVKQHYGFVLYRT TLPQDCSNPAPLSSPLNGVHDRAYVAVDGIPQGVLE
 RNNVITL NITGKAGATLDLLVENMGRVNYGAYIN DFKGLVSNLTLSSNILTDWTIFPLD
 TEDAVRSHLGGWGHRDSGHHDEAWAHNSSNYTLPAFYMGNF SIPS GIPDLPQDTF
 IQFPGWTKGQVWINGFNLGRYWPARGPQLTLFVPQHILMTSAPNTITVLELEWAPCS
 SDD
 PELCAVTFVDRPVIGSSVTYDHP SKPVEKRLMPPPPQKNKDSWLDHVTRTRPLEQK
 LISEEDLAANDILDYKDDDDKV

Purity > 80% as determined by SDS-PAGE and Coomassie blue staining.

Stability Stable for 12 months from the date of receipt of the product under proper storage and handling conditions. Avoid repeated freeze-thaw cycles.

Storage Store at -80 centigrade.

Concentration >50 ug/mL as determined by microplate BCA method.

Preparation Recombinant protein was captured through anti-DDK affinity column followed by conventional chromatography steps.

Protein Families Druggable Genome

Protein Pathways Galactose metabolism, Glycosaminoglycan degradation, Glycosphingolipid biosynthesis - ganglio series, Lysosome, Metabolic pathways, Other glycan degradation, Sphingolipid metabolism

Full Length Full L.

GENE INFORMATION

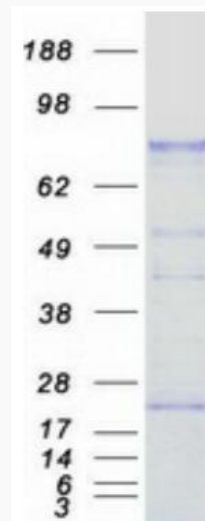
Gene Name [GLB1 galactosidase beta 1 \[Homo sapiens \(human\) \]](#)

 Tel: 1-631-559-9269 1-516-512-3133

 Email: info@creative-biomart.com  Fax: 1-631-938-8127

 45-1 Ramsey Road, Shirley, NY 11967, USA

Official Symbol	GLB1
Synonyms	EBP; ELNR1; MPS4B
Gene ID	2720
mRNA Refseq	NM_000404.4
Protein Refseq	NP_000395.3
MIM	611458
UniProt ID	P16278



Coomassie blue staining of purified GLB1 protein.

 Tel: 1-631-559-9269 1-516-512-3133

 Email: info@creative-biomart.com  Fax: 1-631-938-8127

 45-1 Ramsey Road, Shirley, NY 11967, USA