

Recombinant Human GLB1L Protein, GST-tagged

Cat. No. GLB1L-4947H Lot. No. (See product label)

SPECIFICATION

Product Overview	Human GLB1L full-length ORF (NP_078782.3, 1 a.a. - 654 a.a.) recombinant protein with GST-tag at N-terminal.
Species	Human
Source	Wheat Germ
Description	GLB1L (Galactosidase Beta 1 Like) is a Protein Coding gene. Among its related pathways are Keratan sulfate/keratin metabolism and Glycosaminoglycan metabolism. GO annotations related to this gene include hydrolase activity, hydrolyzing O-glycosyl compounds and beta-galactosidase activity. An important paralog of this gene is GLB1.
Molecular Mass	100.6 kDa
AA Sequence	<pre> MAPKKLSCLRSLLLPLSLTLLLQADTRSFVDRGHDRFLLDGAPFRYVSGSLHYFR VPRVLWADRLLKMRWSGLNAIQFYVPWNYHEPQPGVYNFNNGSRDLIAFLNEAALAN LLVILRPGPYICAEWEMGGLPSWLLRKPEIHLRTSDPDFLAAVDSWFKVLLPKIYPWL YHNGGNIISIQVENEYGSYRACDFS YMRHLAGLFRALLGEKILLFTTDGPEGLKCGSL RGLYTTVDFGPADNMTKIFTLLRKYEPHGPLVNSEYYTGWLDYWGQNHSTRSVSAV TKGLENMLKLGASVNM MYMFHGGTNFGYWNGADKKGRFLPITTSYDYDAPISEAGDP TPKLFALRDVSKFQEVPLGPLPPPSPKMMLGPVTLHLVGHLLAFLDLLCPRGPIHSIL PMTFEAVKQDHGFMLYR TYMTH TIFEPTPFWVPNNGVHDRAYVMVDGVFQGVVER NMRDKLFLTGKLGSKLDILVENMGRLSFGSNSSDFKGLLKPPILGQTILTQWMMFPL </pre>

Tel: 1-631-559-9269 1-516-512-3133

Email: info@creative-biomart.com Fax: 1-631-938-8127

45-1 Ramsey Road, Shirley, NY 11967, USA

KIDNLVKWWFPLQLPKWPYPQAPSGPTFYKTFPILGSGDTPFLYLPGWTKGQVWI
 NGFNLGRYWTKQGPPQTLVPRFLLFPRGALNKITLLELEDVPLQPQVQFLDKPILN
 STSTLHRTHINSLSADTLSASEPMELSGH

Applications	Enzyme-linked Immunoabsorbent Assay Western Blot (Recombinant protein) Antibody Production Protein Array
Notes	Best use within three months from the date of receipt of this protein.
Storage	Store at -80 centigrade. Aliquot to avoid repeated freezing and thawing.
Storage Buffer	50 mM Tris-HCl, 10 mM reduced Glutathione, pH=8.0 in the elution buffer.

GENE INFORMATION

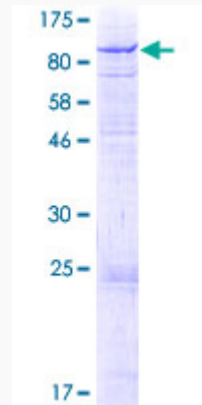
Gene Name	GLB1L galactosidase, beta 1-like [Homo sapiens]
Official Symbol	GLB1L
Synonyms	GLB1L; galactosidase, beta 1-like; beta-galactosidase-1-like protein; MGC10771;
Gene ID	79411
mRNA Refseq	NM_024506
Protein Refseq	NP_078782
UniProt ID	Q6UWU2

 Tel: 1-631-559-9269 1-516-512-3133

 Email: info@creative-biomart.com  Fax: 1-631-938-8127

 45-1 Ramsey Road, Shirley, NY 11967, USA

**Quality Control
Testing**



12.5% SDS-PAGE Stained with Coomassie Blue.

 Tel: 1-631-559-9269 1-516-512-3133

 Email: info@creative-biomart.com  Fax: 1-631-938-8127

 45-1 Ramsey Road, Shirley, NY 11967, USA