

## Recombinant Human GLB1L2 Protein, GST-tagged

Cat. No. GLB1L2-4751H Lot. No. (See product label)

### SPECIFICATION

<b>Product Overview</b>	Human LOC89944 full-length ORF ( NP_612351.2, 1 a.a. - 636 a.a.) recombinant protein with GST-tag at N-terminal.
<b>Species</b>	Human
<b>Source</b>	Wheat Germ
<b>Description</b>	GLB1L2 (Galactosidase Beta 1 Like 2) is a Protein Coding gene. GO annotations related to this gene include hydrolase activity, hydrolyzing O-glycosyl compounds and beta-galactosidase activity. An important paralog of this gene is GLB1L3.
<b>Molecular Mass</b>	98.5 kDa
<b>AA Sequence</b>	<p>MTTWSLRRRPPARTLGLLLLVLGFLVLRRLDWSTLVPLRLRHRQLGLQAKGWNFML  EDSTFWIFGGSIHYFRVPREYWRDRLLKMKACGLNLTTTYVPWNLHEPERGKFD  GNDLEAFVLMAAEIGLWVILRPGPYICSEMDLGGLPSWLLQDPGMRLRTTYKGFTE  AVDLYFDHLMRSRVVPLQYKRGGPPIAVQVENEYGSYNKDPAYMPYVKKALEDRGIVE  LLLTSDNKDGLSKGIVQGVLATINLQSTHELQLLTTFLFNVQGTQPKMVM EYWTGWF  DSWGGPHNILDSSSEVLKTVSAIVDAGSSINLYMFHGGTNFGFMNGAMHFHDYKSDV  TSYDYDAVLTEAGDYTAKYMKLRDFFGSSISGIPLPPPPDLLPKMPYEPLTPVLYLSLW  DALKYLGEPIKSEKPINMENLPVNGGNGQSFYILYETSITSSGILSGHVHDRGQV  NTVSIGFLDYKTTKIAVPLIQGYTVLRILVENRGRVNYGENIDDQRKGLIGNLYLNDSP  LKNFRIYSLDMKKSFFQRFGLDKWSSLPETPTLPAFFLGSLSSISSTPCDTFLKLEGWE  KGVVFINGQNLGRYWNIGPQKTLYLPGPWLSSGINQVIVFEETMAGPALQFTETPHL</p>

 Tel: 1-631-559-9269 1-516-512-3133

 Email: [info@creative-biomart.com](mailto:info@creative-biomart.com)  Fax: 1-631-938-8127

 45-1 Ramsey Road, Shirley, NY 11967, USA

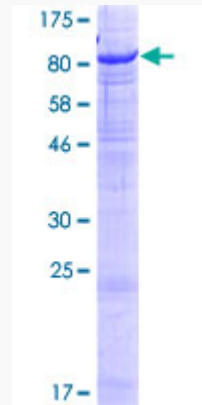
	GRNQYIK
<b>Applications</b>	Enzyme-linked Immunoabsorbent Assay Western Blot (Recombinant protein) Antibody Production Protein Array
<b>Notes</b>	Best use within three months from the date of receipt of this protein.
<b>Storage</b>	Store at -80 centigrade. Aliquot to avoid repeated freezing and thawing.
<b>Storage Buffer</b>	50 mM Tris-HCl, 10 mM reduced Glutathione, pH=8.0 in the elution buffer.
<b>GENE INFORMATION</b>	
<b>Gene Name</b>	GLB1L2 galactosidase beta 1 like 2 [ Homo sapiens (human) ]
<b>Official Symbol</b>	GLB1L2
<b>Synonyms</b>	GLB1L2; galactosidase beta 1 like 2; MST114; MSTP114; beta-galactosidase-1-like protein 2; EC 3.2.1.23
<b>Gene ID</b>	89944
<b>mRNA Refseq</b>	NM_138342
<b>Protein Refseq</b>	NP_612351
<b>UniProt ID</b>	Q8IW92

 Tel: 1-631-559-9269 1-516-512-3133

 Email: [info@creative-biomart.com](mailto:info@creative-biomart.com)  Fax: 1-631-938-8127

 45-1 Ramsey Road, Shirley, NY 11967, USA

**Quality Control  
Testing**



12.5% SDS-PAGE Stained with Coomassie Blue

 Tel: 1-631-559-9269 1-516-512-3133

 Email: [info@creative-biomart.com](mailto:info@creative-biomart.com)  Fax: 1-631-938-8127

 45-1 Ramsey Road, Shirley, NY 11967, USA