

Recombinant Human GLCE Protein, GST-tagged

Cat. No. GLCE-4949H Lot. No. (See product label)

SPECIFICATION

Product Overview	Human GLCE full-length ORF (NP_056369.1, 1 a.a. - 617 a.a.) recombinant protein with GST-tag at N-terminal.
Species	Human
Source	Wheat Germ
Description	Heparan sulfate (HS) is a negatively charged cell surface polysaccharide required for the biologic activities of circulating extracellular ligands. GLCE is responsible for epimerization of D-glucuronic acid (GlcA) to L-iduronic acid (IdoA) of HS, which endows the nascent polysaccharide chain with the ability to bind growth factors and cytokines (Ghiselli and Agrawal, 2005 [PubMed 15853773]).[supplied by OMIM
Molecular Mass	96.5 kDa
AA Sequence	MRCLAARVNYKTLIIICALFTLVTVLLWNKCSSDKAIQFPRRSSSGFRVDGF EKRAAA SESNNYMNHVAKQQQSEEAFFPQEQQKAPPVVGGFNSNVGSKVLGLKYEEIDCLINDE HTIKGRREGNEVFLPFTWVEKYFDVYGKVVQYDGYDRFEFSHSYSKVYAQRAPYHP DGVFMSFEGYNVEVRDRVKCISGVEGVPLSTQWGPQGYFYPIQIAQYGLSHYSKNL TEKPPHIEVYETAEDRDKNKPNDWTVPKGCFMANVADKSRFTNVKQFIAPETSEGV SLQLGNTKDFIISFDLKFLTNGSVSVVLETTEKNQLFTIHVVSNAQLIAFKERDIYYGIG PRTSWSTVTRDLVTDLRKGVGLSNTKAVKPTKIMPKKVVRLIAKGGKGF LDNITISTTA HMAAFFAASDWLVARNQDEKGGWPIMVTRKLGEGFKSLEPGWYSAMAQQQAISTLV RAYLLTKDHIFLNSALRATAPYKFLSEQHGVKAVFMNKHDWYEEYPTTPSSFVLNGF

 Tel: 1-631-559-9269 1-516-512-3133

 Email: info@creative-biomart.com  Fax: 1-631-938-8127

 45-1 Ramsey Road, Shirley, NY 11967, USA

MYSLIGLYDLKETAGEKLGKEARSLYERGMESLKAMLPLYDTGSGTIYDLRHFMLGIA
PNLARWDYHTTHINQLQLLSTIDESPVFKEFVKRWKSYLKGSRAKHN

Applications
Enzyme-linked Immunoabsorbent Assay
Western Blot (Recombinant protein)
Antibody Production
Protein Array

Notes Best use within three months from the date of receipt of this protein.

Storage Store at -80 centigrade. Aliquot to avoid repeated freezing and thawing.

Storage Buffer 50 mM Tris-HCl, 10 mM reduced Glutathione, pH=8.0 in the elution buffer.

GENE INFORMATION

Gene Name [GLCE glucuronic acid epimerase \[Homo sapiens \]](#)

Official Symbol [GLCE](#)

Synonyms GLCE; glucuronic acid epimerase; D glucuronyl C5 epimerase, UDP glucuronic acid epimerase; D-glucuronyl C5-epimerase; heparan sulfate epimerase; HSEPI; KIAA0836; glucuronyl C5-epimerase; UDP-glucuronic acid epimerase; heparin/heparan sulfate-glucuronic acid C5-epimerase; heparin/heparan sulfate:glucuronic acid C5-epimerase;

Gene ID [26035](#)

mRNA Refseq [NM_015554](#)

Protein Refseq [NP_056369](#)

 Tel: 1-631-559-9269 1-516-512-3133

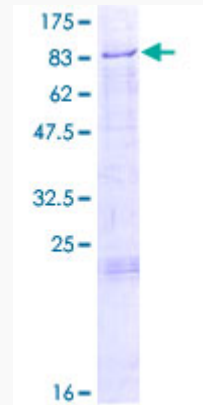
 Email: info@creative-biomart.com  Fax: 1-631-938-8127

 45-1 Ramsey Road, Shirley, NY 11967, USA

MIM 612134

UniProt ID O94923

Quality Control
Testing



12.5% SDS-PAGE Stained with Coomassie Blue.

 Tel: 1-631-559-9269 1-516-512-3133

 Email: info@creative-biomart.com  Fax: 1-631-938-8127

 45-1 Ramsey Road, Shirley, NY 11967, USA