

## Recombinant Human GLCE Protein (29-617 aa), His-tagged

Cat. No. GLCE-525H Lot. No. (See product label)

### SPECIFICATION

<b>Product Overview</b>	Recombinant Human GLCE Protein (29-617 aa) is produced by E. coli expression system. This protein is fused with a 6xHis tag at the N-terminal. Research Area: Cancer. Protein Description: Partial.
<b>Species</b>	Human
<b>Source</b>	E.coli
<b>ProteinLength</b>	29-617 aa
<b>Description</b>	Converts D-glucuronic acid residues adjacent to N-sulfate sugar residues to L-iduronic acid residues, both in maturing heparan sulfate (HS) and heparin chains. This is important for further modifications that determine the specificity of interactions between these glycosaminoglycans and proteins.
<b>Form</b>	Tris-based buffer, 50% glycerol
<b>Molecular Mass</b>	70.9 kDa
<b>AA Sequence</b>	NKCSSDKAIQFPRRSSSGFRVDGFEEKRAAASESNMYMNHVAKQQSEEAFPQEQQK APPVGGFNNSVGSKVLGLKYEEIDCLINDEHTIKGRREGNEVFLPFTWVEKYFDVY GKVVQYDGYDRFEFSHSYSKYVAQRAPYHPDGVFMSFEGYNVEVRDRVKCISGVE GVPLSTQWGPQGYFYPIQIAQYGLSHYSKNLTEKPPHIEVYETAEDRDKNKPNPDWT VPKGCFMANVADKSRFTNVKQFIAPETSEGVSLQLGNTKDFIISFDLKFLLTNGSVSVV LETTEKNQLFTIHVVSNAQLIAFKERDIYYGIGPRTSWSTVTRDLVTDLRKGVLSNT

 Tel: 1-631-559-9269 1-516-512-3133

 Email: [info@creative-biomart.com](mailto:info@creative-biomart.com)  Fax: 1-631-938-8127

 45-1 Ramsey Road, Shirley, NY 11967, USA

KAVKPTKIMPKKVVRLIAKGGKFLDNITISTTAHMAAFFAASDWLVRNQDEKGGWPI  
 MVTRKLGEGFKSLEPGWYSAMAQQQAISTLVRAYLLTKDHIFLNSALRATAPYKFLS  
 EQHGVKAVFMNKHDWYEEYPTTPSSFVNLNGFMYSLIGLYDLKETAGEKLGKEARSL  
 YERGMEKAMLPLYDTGSGTIYDLRHFMLGIAPNLRWDYHTTHINQLQLLSTIDES  
 PVFKEFVKRWKSYLKGSRAKHN

**Purity** > 90% as determined by SDS-PAGE.

**Notes** Repeated freezing and thawing is not recommended. Store working aliquots at 4 centigrade for up to one week.

**Storage** The shelf life is related to many factors, storage state, buffer ingredients, storage temperature and the stability of the protein itself. Generally, the shelf life of liquid form is 6 months at -20 centigrade/-80 centigrade. The shelf life of lyophilized form is 12 months at -20 centigrade/-80 centigrade.

**Concentration** A hardcopy of COA with concentration instruction is sent along with the products.

## GENE INFORMATION

**Gene Name** [GLCE glucuronic acid epimerase \[ Homo sapiens \]](#)

**Official Symbol** [GLCE](#)

**Synonyms** GLCE; HSEPI; KIAA0836;

**Gene ID** [26035](#)

**mRNA Refseq** [NM\\_015554](#)

**Protein Refseq** [NP\\_056369](#)

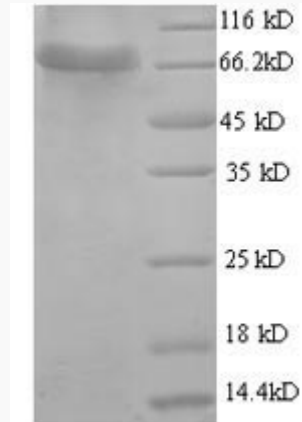
 Tel: 1-631-559-9269 1-516-512-3133

 Email: [info@creative-biomart.com](mailto:info@creative-biomart.com)  Fax: 1-631-938-8127

 45-1 Ramsey Road, Shirley, NY 11967, USA

**MIM** 612134

**UniProt ID** O94923



(Tris-Glycine gel) Discontinuous SDS-PAGE (reduced) with 5% enrichment gel and 15% separation gel.

 Tel: 1-631-559-9269 1-516-512-3133

 Email: [info@creative-biomart.com](mailto:info@creative-biomart.com)  Fax: 1-631-938-8127

 45-1 Ramsey Road, Shirley, NY 11967, USA