

## Recombinant Human GLDC Protein, GST-tagged

Cat. No. GLDC-4950H Lot. No. (See product label)

### SPECIFICATION

<b>Product Overview</b>	Human GLDC partial ORF ( NP_000161.1, 922 a.a. - 1020 a.a.) recombinant protein with GST-tag at N-terminal.
<b>Species</b>	Human
<b>Source</b>	Wheat Germ
<b>Description</b>	The enzyme system for cleavage of glycine (glycine cleavage system; GCS; EC 2.1.2.10), which is confined to the mitochondria, is composed of 4 protein components: P protein (a pyridoxal phosphate-dependent glycine decarboxylase), H protein (a lipoic acid-containing protein), T protein (a tetrahydrofolate-requiring enzyme), and L protein (a lipoamide dehydrogenase). Glycine encephalopathy (GCE; MIM 605899) may be due to a defect in any one of these enzymes; see MIM 238310, MIM 238330, and MIM 238331.[supplied by OMIM
<b>Molecular Mass</b>	36.63 kDa
<b>AA Sequence</b>	AMISIRQEIADIEEGRIDPRVNPLKMSPHSLTCVTSSHWDRPYSREVAAPFLPFMKPE NKFWPTIARIDDIYGDQHLVCTCPPMEVYESPFSEQKRASS
<b>Applications</b>	Enzyme-linked Immunoabsorbent Assay Western Blot (Recombinant protein) Antibody Production Protein Array

 Tel: 1-631-559-9269 1-516-512-3133

 Email: [info@creative-biomart.com](mailto:info@creative-biomart.com)  Fax: 1-631-938-8127

 45-1 Ramsey Road, Shirley, NY 11967, USA

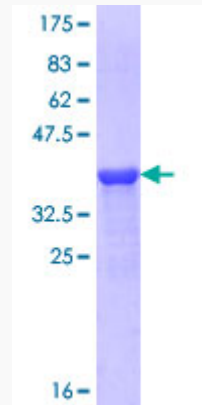
<b>Notes</b>	Best use within three months from the date of receipt of this protein.
<b>Storage</b>	Store at -80 centigrade. Aliquot to avoid repeated freezing and thawing.
<b>Storage Buffer</b>	50 mM Tris-HCl, 10 mM reduced Glutathione, pH=8.0 in the elution buffer.
<b>GENE INFORMATION</b>	
<b>Gene Name</b>	GLDC glycine dehydrogenase (decarboxylating) [ Homo sapiens ]
<b>Official Symbol</b>	GLDC
<b>Synonyms</b>	GLDC; glycine dehydrogenase (decarboxylating); glycine dehydrogenase (decarboxylating; glycine decarboxylase, glycine cleavage system protein P); glycine dehydrogenase [decarboxylating], mitochondrial; GCSP; glycine cleavage system protein P; glycine decarboxylase; NKH; glycine decarboxylase P-protein; glycine cleavage system P protein; GCE; HYGN1; MGC138198; MGC138200;
<b>Gene ID</b>	2731
<b>mRNA Refseq</b>	NM_000170
<b>Protein Refseq</b>	NP_000161
<b>MIM</b>	238300
<b>UniProt ID</b>	P23378

 Tel: 1-631-559-9269 1-516-512-3133

 Email: [info@creative-biomart.com](mailto:info@creative-biomart.com)  Fax: 1-631-938-8127

 45-1 Ramsey Road, Shirley, NY 11967, USA

**Quality Control  
Testing**



12.5% SDS-PAGE Stained with Coomassie Blue.

 Tel: 1-631-559-9269 1-516-512-3133

 Email: [info@creative-biomart.com](mailto:info@creative-biomart.com)  Fax: 1-631-938-8127

 45-1 Ramsey Road, Shirley, NY 11967, USA