

KGGSNTLVRFEFGQETSQTLKLENALYFDRKYLFANSKTYFNLAVDEKGLWIIYASSV
 DGSSILVAQLDERTFSVVQHVNTTYPKSKAGNAFIARGILYVTDTKDMRVTFADFLLG
 GKQINANFDLRTSQSVLAMLAYNMRDQHLYSWEDGHLMLYPVQFLSTTLNQTRTRP
 LEQKLISEEDLAANDILDYKDDDDKV

Purity > 80% as determined by SDS-PAGE and Coomassie blue staining

Stability Stable for 3 months from receipt of products under proper storage and handling conditions.

Storage Store at -80 centigrade. Avoid repeated freeze-thaw cycles.

Concentration 50 µg/mL as determined by BCA

Storage Buffer 100 mM glycine, 25 mM Tris-HCl, pH 7.3.

GENE INFORMATION

Gene Name GLDN gliomedin [*Homo sapiens* (human)]

Official Symbol GLDN

Synonyms GLDN; gliomedin; collomin, COLM; CLOM; colmedin; CRG L2; UNC 112; collomin; COLM; CRGL2; CRG-L2; UNC-112; FLJ23917;

Gene ID 342035

mRNA Refseq NM_181789

Protein Refseq NP_861454

 Tel: 1-631-559-9269 1-516-512-3133

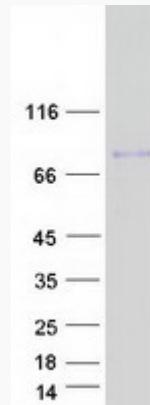
 Email: info@creative-biomart.com  Fax: 1-631-938-8127

 45-1 Ramsey Road, Shirley, NY 11967, USA

MIM 608603

UniProt ID Q6ZMI3

SDS-PAGE



 Tel: 1-631-559-9269 1-516-512-3133

 Email: info@creative-biomart.com  Fax: 1-631-938-8127

 45-1 Ramsey Road, Shirley, NY 11967, USA