

# Recombinant Full Length Human GLDN Protein, C-Flag-tagged

Cat. No. GLDN-328HFL Lot. No. (See product label)

## SPECIFICATION

<b>Product Overview</b>	Recombinant Full Length Human GLDN Protein, fused to Flag-tag at C-terminus, was expressed in Mammalian cells.
<b>Species</b>	Human
<b>Source</b>	Mammalian Cells
<b>Description</b>	This gene encodes a protein that contains olfactomedin-like and collagen-like domains. The encoded protein, which exists in both transmembrane and secreted forms, promotes formation of the nodes of Ranvier in the peripheral nervous system. Mutations in this gene cause a form of lethal congenital contracture syndrome in human patients. Autoantibodies to the encoded protein have been identified in sera from patients with multifocal motor neuropathy.
<b>Form</b>	25 mM Tris HCl, pH 7.3, 100 mM glycine, 10% glycerol.
<b>Molecular Mass</b>	58.8 kDa
<b>AA Sequence</b>	MARGAEGGRGDAGWGLRGALAAVALLSALNAAGTVFALCQWRGLSSALRALEAQR GREQREDSALRSFLA ELSRAPRGASAPPQDPASSARNKRSHSGEPAPHIRAESH MLMMMTYSMPVIRVMVDLCNSTKGICLTGP SGPPGPPGAGGLPGHNLGDGQPGP QGPKGEK GANGKRGKMGIPGAAGNPGERGEKGDHGLGLOGNEGPP GQKGEKG DKGDVSNVDLLAGAKGDQGGPPGPPGPPGPPGPPGPPGRRAKGPRQPSMFNGQ CPGETCAIPN DDTLVGKADEKASEHHSPAESMITSIGNPVQVLKVTETFGTWIRES ANKSDDRIWVTEHFSGIMVKEFK DQPSLLNGSYTFIHLPPYFHHGCGHVYNNLSLYY

 Tel: 1-631-559-9269 1-516-512-3133

 Email: [info@creative-biomart.com](mailto:info@creative-biomart.com)  Fax: 1-631-938-8127

 45-1 Ramsey Road, Shirley, NY 11967, USA

HKGGSNLVRFEFGQETSQTLKLENALYFDRKYL FAN SKTYFNLAVDEKGLWIIYAS  
 SVDGSSILVAQLDERTFSVVQHVNTTYPKSKAGNAFIARGILYVTDTKDM  
 RVTFAFDLLGGKQINANFDLRTSQSVLAMLAYNMRDQHLYSWEDGHLMLYPVQFLS  
 TTLNQTRTRPLEQKLISEEDLAANDILDYKDDDDKV

<b>Purity</b>	> 80% as determined by SDS-PAGE and Coomassie blue staining.
<b>Stability</b>	Stable for 12 months from the date of receipt of the product under proper storage and handling conditions. Avoid repeated freeze-thaw cycles.
<b>Storage</b>	Store at -80 centigrade.
<b>Concentration</b>	>50 ug/mL as determined by microplate BCA method.
<b>Preparation</b>	Recombinant protein was captured through anti-DDK affinity column followed by conventional chromatography steps.
<b>Protein Families</b>	Transmembrane
<b>Full Length</b>	Full L.

## GENE INFORMATION

<b>Gene Name</b>	GLDN gliomedin [ Homo sapiens (human) ]
<b>Official Symbol</b>	GLDN
<b>Synonyms</b>	CLOM; COLM; CRGL2; CRG-L2; LCCS11; UNC-112; UNC-122
<b>Gene ID</b>	342035

 Tel: 1-631-559-9269 1-516-512-3133

 Email: [info@creative-biomart.com](mailto:info@creative-biomart.com)  Fax: 1-631-938-8127

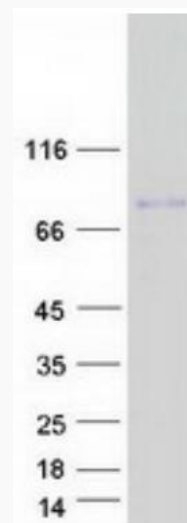
 45-1 Ramsey Road, Shirley, NY 11967, USA

mRNA Refseq [NM\\_181789.4](#)

Protein Refseq [NP\\_861454.2](#)

MIM [608603](#)

UniProt ID [Q6ZMI3](#)



Coomassie blue staining of purified GLDN protein.

 Tel: 1-631-559-9269 1-516-512-3133

 Email: [info@creative-biomart.com](mailto:info@creative-biomart.com)  Fax: 1-631-938-8127

 45-1 Ramsey Road, Shirley, NY 11967, USA