

## Recombinant Human GLE1 protein, GST-tagged

**Cat. No.** GLE1-5322H    **Lot. No.** (See product label)

### SPECIFICATION

<b>Product Overview</b>	Recombinant Human GLE1 protein(1-118 aa), fused with N-terminal GST tag, was expressed in E.coli.
<b>Species</b>	Human
<b>Source</b>	E.coli
<b>ProteinLength</b>	1-118 aa
<b>Form</b>	The purified protein was lyophilized from sterile phosphate-buffered saline (PBS: 58 mM Na <sub>2</sub> HPO <sub>4</sub> , 17 mM NaH <sub>2</sub> PO <sub>4</sub> , 68 mM NaCl, pH 8.0). Prior to lyophilization, 5% (w/v) trehalose and 5% (w/v) mannitol were incorporated as cryoprotective excipients.
<b>AASequence</b>	MPSEGRWCWETLKALRSSDKGRLCYIRDWLLRREDVLEECMSLPKLSSYSGWVVEH VLPHMQENQPLSETSPSSTSASALDQPSFVPKSPDASSAFSPASPATPNGTKGKDE SQHTESM
<b>Purity</b>	85%, by SDS-PAGE with Coomassie Brilliant Blue staining.
<b>Storage</b>	Store at 2-8°C for 1-2 weeks. Aliquot and store at -20°C to -80°C for up to 3 months, reconstitution with sterile water and addition of an equal volume of glycerol. Avoid repeat freeze-thaw cycles.
<b>Reconstitution</b>	Dissolve the product in 200 µl sterile water to achieve a working concentration of 0.25

 Tel: 1-631-559-9269    1-516-512-3133

 Email: [info@creative-biomart.com](mailto:info@creative-biomart.com)     Fax: 1-631-938-8127

 45-1 Ramsey Road, Shirley, NY 11967, USA

g/μl. If experimental compatibility allows, mix the aqueous solution with an equal volume of glycerol (1:1 ratio) after initial reconstitution.

## GENE INFORMATION

<b>Gene Name</b>	GLE1 GLE1 RNA export mediator homolog (yeast) [ Homo sapiens ]
<b>Official Symbol</b>	GLE1
<b>Synonyms</b>	GLE1; GLE1 RNA export mediator homolog (yeast); GLE1 (yeast homolog) like, RNA export mediator , GLE1 RNA export mediator (yeast) , GLE1 RNA export mediator like (yeast) , GLE1L, LCCS1, lethal congenital contracture syndrome 1; nucleoporin GLE1; hGLE1; GLE1-like protein; GLE1-like, RNA export mediator; LCCS; GLE1L; LCCS1;
<b>Gene ID</b>	2733
<b>mRNA Refseq</b>	NM_001003722
<b>Protein Refseq</b>	NP_001003722
<b>MIM</b>	603371
<b>UniProt ID</b>	Q53GS7

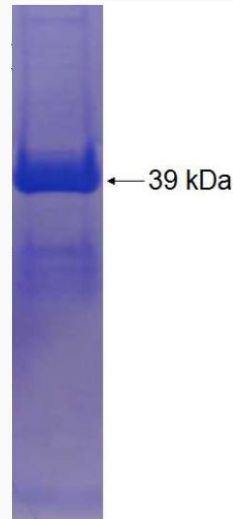
 Tel: 1-631-559-9269 1-516-512-3133

 Email: [info@creative-biomart.com](mailto:info@creative-biomart.com)  Fax: 1-631-938-8127

 45-1 Ramsey Road, Shirley, NY 11967, USA



SDS-PAGE



Tel: 1-631-559-9269 1-516-512-3133

Email: [info@creative-biomart.com](mailto:info@creative-biomart.com) Fax: 1-631-938-8127

45-1 Ramsey Road, Shirley, NY 11967, USA