

Recombinant Human GLE1 protein, His-tagged

Cat. No. GLE1-5323H **Lot. No.** (See product label)

SPECIFICATION

Product Overview	Recombinant Human GLE1 protein(1-118 aa), fused with N-terminal His tag, was expressed in E.coli.
Species	Human
Source	E.coli
ProteinLength	1-118 aa
Form	The purified protein was lyophilized from sterile phosphate-buffered saline (PBS: 58 mM Na ₂ HPO ₄ , 17 mM NaH ₂ PO ₄ , 68 mM NaCl, pH 7.4). Prior to lyophilization, 5% (w/v) trehalose and 5% (w/v) mannitol were incorporated as cryoprotective excipients.
AASequence	MPSEGRCWETLKALRSSDKGRLCYIRDWLLRREDVLEECMSLPKLSSYSGWVVEH VLPHMQENQPLSETSPSSTSASALDQPSFVPKSPDASSAFSPASPATPNGTKGKDE SQHTESM
Purity	85%, by SDS-PAGE with Coomassie Brilliant Blue staining.
Storage	Store at 2-8°C for 1-2 weeks. Aliquot and store at -20°C to -80°C for up to 3 months, reconstitution with sterile water and addition of an equal volume of glycerol. Avoid repeat freeze-thaw cycles.
Reconstitution	Dissolve the product in 200 µl sterile water to achieve a working concentration of 0.25

 Tel: 1-631-559-9269 1-516-512-3133

 Email: info@creative-biomart.com  Fax: 1-631-938-8127

 45-1 Ramsey Road, Shirley, NY 11967, USA

g/μl. If experimental compatibility allows, mix the aqueous solution with an equal volume of glycerol (1:1 ratio) after initial reconstitution.

GENE INFORMATION

Gene Name	GLE1 GLE1 RNA export mediator homolog (yeast) [Homo sapiens]
Official Symbol	GLE1
Synonyms	GLE1; GLE1 RNA export mediator homolog (yeast); GLE1 (yeast homolog) like, RNA export mediator , GLE1 RNA export mediator (yeast) , GLE1 RNA export mediator like (yeast) , GLE1L, LCCS1, lethal congenital contracture syndrome 1; nucleoporin GLE1; hGLE1; GLE1-like protein; GLE1-like, RNA export mediator; LCCS; GLE1L; LCCS1;
Gene ID	2733
mRNA Refseq	NM_001003722
Protein Refseq	NP_001003722
MIM	603371
UniProt ID	Q53GS7

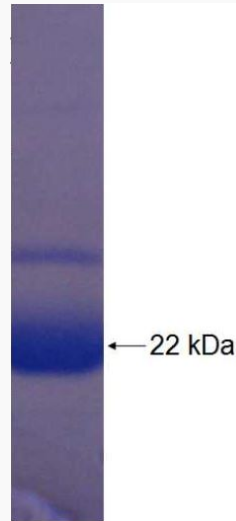
 Tel: 1-631-559-9269 1-516-512-3133

 Email: info@creative-biomart.com  Fax: 1-631-938-8127

 45-1 Ramsey Road, Shirley, NY 11967, USA



SDS-PAGE



Tel: 1-631-559-9269 1-516-512-3133

Email: info@creative-biomart.com Fax: 1-631-938-8127

45-1 Ramsey Road, Shirley, NY 11967, USA