

Recombinant Human GLG1 protein, His & T7-tagged

Cat. No. GLG1-1709H Lot. No. (See product label)

SPECIFICATION

Product Overview	Recombinant Human GLG1 aa. (Lys1048~Asn1145 (Accession # Q92896)) fused with N-terminal His & T7 tag was produced in E. coli cells.
Species	Human
Source	E.coli
ProteinLength	Lys1048~Asn1145
Form	Freeze-dried powder
Molecular Mass	Predicted Molecular Mass: 14.8kDa
Endotoxin	<1.0EU per 1ug (determined by the LAL method)
Purity	>95%
Applications	SDS-PAGE; WB; ELISA; IP.
Stability	The thermal stability is described by the loss rate. The loss rate was determined by accelerated thermal degradation test, that is, incubate the protein at 37°C for 48h, and no obvious degradation and precipitation were observed. The loss rate is less than 5% within the expiration date under appropriate storage condition.
Storage	Avoid repeated freeze/thaw cycles. Store at 2-8°C for one month. Aliquot and store at

 Tel: 1-631-559-9269 1-516-512-3133

 Email: info@creative-biomart.com  Fax: 1-631-938-8127

 45-1 Ramsey Road, Shirley, NY 11967, USA

-80°C for 12 months.

Storage buffer Supplied as lyophilized form in PBS, pH7.4, containing 5% sucrose, 0.01% sarcosyl.

Reconstitution Reconstitute in sterile PBS, pH7.2-pH7.4.

Isoelectric Point 8.8

GENE INFORMATION

Gene Name [GLG1 golgi glycoprotein 1 \[Homo sapiens \(human\) \]](#)

Official Symbol [GLG1](#)

Synonyms GLG1; golgi glycoprotein 1; CFR-1; ESL-1; MG160; MG-160; Golgi apparatus protein 1; E-selectin ligand 1; cysteine-rich fibroblast growth factor receptor; golgi sialoglycoprotein MG-160

Gene ID [2734](#)

mRNA Refseq [NM_001145666.1](#)

Protein Refseq [NP_001139138.1](#)

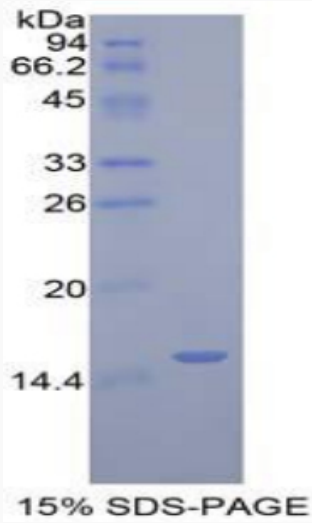
UniProt ID [Q92896](#)

 Tel: 1-631-559-9269 1-516-512-3133

 Email: info@creative-biomart.com  Fax: 1-631-938-8127

 45-1 Ramsey Road, Shirley, NY 11967, USA

SDS-PAGE



 Tel: 1-631-559-9269 1-516-512-3133

 Email: info@creative-biomart.com  Fax: 1-631-938-8127

 45-1 Ramsey Road, Shirley, NY 11967, USA