

Recombinant Human GLG1 Protein (Lys1048-Asn1145), N-His tagged

Cat. No. GLG1-2793H **Lot. No.** (See product label)

SPECIFICATION

Product Overview	Recombinant human GLG1 (Lys1048-Asn1145) protein fused with the N-His tag was expressed in E. coli.
Species	Human
Source	E.coli
ProteinLength	Lys1048-Asn1145
Molecular Mass	13.31 kDa
Purity	>90 % as determined by SDS-PAGE.
Notes	For research use only.
Storage	Use a manual defrost freezer and avoid repeated freeze thaw cycles. Store at 2 to 8 centigrade for one week. Store at -20 to -80 centigrade for twelve months from the date of receipt.
Storage Buffer	0.01M PBS, pH 7.4, 0.02 % NLS
Reconstitution	Reconstitute in sterile water for a stock solution.
Shipping	In general, proteins are provided as lyophilized powder/frozen liquid. They are

 Tel: 1-631-559-9269 1-516-512-3133

 Email: info@creative-biomart.com  Fax: 1-631-938-8127

 45-1 Ramsey Road, Shirley, NY 11967, USA

shipped out with dry ice/blue ice unless customers require otherwise.

GENE INFORMATION

Gene Name GLG1 golgi glycoprotein 1 [Homo sapiens (human)]

Official Symbol GLG1

Synonyms GLG1; golgi glycoprotein 1; golgi apparatus protein 1; Golgi apparatus protein 1; CFR 1; ESL 1; MG 160; E-selectin ligand 1; golgi sialoglycoprotein MG-160; cysteine-rich fibroblast growth factor receptor; CFR-1; ESL-1; MG160; MG-160; FLJ23319; FLJ23967; FLJ32797; DKFZp686L08213;

Gene ID 2734

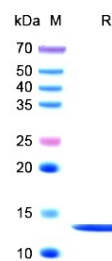
mRNA Refseq NM_001145666

Protein Refseq NP_001139138

MIM 600753

UniProt ID Q92896

SDS-PAGE



Tel: 1-631-559-9269 1-516-512-3133

Email: info@creative-biomart.com Fax: 1-631-938-8127

45-1 Ramsey Road, Shirley, NY 11967, USA