

Recombinant Human GLI1 Protein, GST/pstS1-tagged

Cat. No. GLI1-4955H Lot. No. (See product label)

SPECIFICATION

Product Overview	Human GLI1 partial ORF (AAH13000.1, 401 a.a. - 500 a.a.) recombinant protein with GST-pstS1 tag at N-terminal.
Species	Human
Source	Wheat Germ
ProteinLength	401-500 a.a.
Description	This gene encodes a member of the Kruppel family of zinc finger proteins. The encoded transcription factor is activated by the sonic hedgehog signal transduction cascade and regulates stem cell proliferation. The activity and nuclear localization of this protein is negatively regulated by p53 in an inhibitory loop. Multiple transcript variants encoding different isoforms have been found for this gene. [provided by RefSeq]
Molecular Mass	39.05 kDa
AA Sequence	GPLPRAPSISTVEPKREREGGPIREESRLTVPEGAMKQPSPGAQSSCSSDHSPAG SAANTDSGVEMTGNAGGSTEDLSSLDEGPCIAGTGLSTLRRLEN
Applications	Enzyme-linked Immunoabsorbent Assay Western Blot (Recombinant protein) Antibody Production Protein Array

 Tel: 1-631-559-9269 1-516-512-3133

 Email: info@creative-biomart.com  Fax: 1-631-938-8127

 45-1 Ramsey Road, Shirley, NY 11967, USA

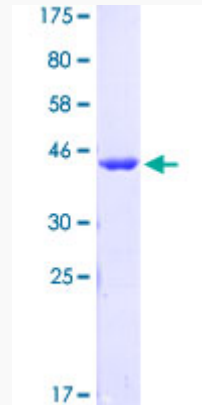
Notes	Best use within three months from the date of receipt of this protein.
Storage	Store at -80 centigrade. Aliquot to avoid repeated freezing and thawing.
Storage Buffer	50 mM Tris-HCl, 10 mM reduced Glutathione, pH=8.0 in the elution buffer.
GENE INFORMATION	
Gene Name	GLI1 GLI family zinc finger 1 [Homo sapiens]
Official Symbol	GLI1
Synonyms	GLI1; GLI family zinc finger 1; GLI, glioma associated oncogene family zinc finger 1, glioma associated oncogene homolog 1 (zinc finger protein); zinc finger protein GLI1; oncogene GLI; glioma-associated oncogene 1; glioma-associated oncogene homolog 1 (zinc finger protein); GLI;
Gene ID	2735
mRNA Refseq	NM_001160045
Protein Refseq	NP_001153517
MIM	165220
UniProt ID	P08151

 Tel: 1-631-559-9269 1-516-512-3133

 Email: info@creative-biomart.com  Fax: 1-631-938-8127

 45-1 Ramsey Road, Shirley, NY 11967, USA

**Quality Control
Testing**



12.5% SDS-PAGE Stained with Coomassie Blue

 Tel: 1-631-559-9269 1-516-512-3133

 Email: info@creative-biomart.com  Fax: 1-631-938-8127

 45-1 Ramsey Road, Shirley, NY 11967, USA