

# Recombinant Human GLI1 Protein, Myc/DDK-tagged, C13 and N15-labeled

**Cat. No.** GLI1-598H    **Lot. No.** (See product label)

## SPECIFICATION

<b>Product Overview</b>	GLI1 MS Standard C13 and N15-labeled recombinant protein (NP_005260) with a C-terminal MYC/DDK tag, was expressed in HEK293 cells.
<b>Species</b>	Human
<b>Source</b>	HEK293
<b>Description</b>	This gene encodes a member of the Kruppel family of zinc finger proteins. The encoded transcription factor is activated by the sonic hedgehog signal transduction cascade and regulates stem cell proliferation. The activity and nuclear localization of this protein is negatively regulated by p53 in an inhibitory loop. Multiple transcript variants encoding different isoforms have been found for this gene.
<b>Molecular Mass</b>	117.9 kDa
<b>AA Sequence</b>	MFNSMTPPPISSYGEPCCCLRPLPSQGAPSVGTEGLSGPPFCHQANLMSGPHSYGP ARETNSCTEGPLFSSPRSAVKLTKKRALSISPLSDASLDLQTVIRTSPSSLVAFINSRC TSPGGSYGHLSIGTMSPSLGFPAQMNHQKGPSPSFGVQPCGPHDSARGGMIPHPQ SRGPFPTCQLKSELDMLVGKCREEPLEGDMSSPNSTGIQDPLLGMLDGREDLEREE KREPESVYETDCRWDGCSQEFDSQEQLVHHINSEHIHGERKEFVCHWGGCSREL PFAQYMLVVHMRRHTGEKPHKCTFEGCRKSYSRLENLKTHLRSHTGEKPYMCEH EGCSKAFSNASDRAKHQNRTHSNEKPYVCKLPGCTKRYTDPSSLRKHVKTVHGPD AHVTKRHRGDGPLPRAPSISTVEPKREREGGPIREESRLTVPEGAMKPQPSPGAQS

 Tel: 1-631-559-9269    1-516-512-3133

 Email: [info@creative-biomart.com](mailto:info@creative-biomart.com)     Fax: 1-631-938-8127

 45-1 Ramsey Road, Shirley, NY 11967, USA



SCSSDHSPAGSAANTDSGVEMTGNAGGSTEDLSSLDEGPCIAGTGLSTLRRLENLR  
 LDQLHQLRPIGTRGLKLPSSLHTGTTVSRRVGGPPVSLERRSSSSSSISSAYTVSRRS  
 SLASFPFPPGSPENGASSLPLMPAQHYLLRARYASARGGGTSPTAASSLDRIGGL  
 PMPPWRSRAEYPGYNPNAGVTRRASDPAQAADRPAPARVQRFKSLGCVHTPPTV  
 AGGGQNFDPYLPTSVYSPQPPSITENAAMDARGLQEEPEVGTSMVGSGLNPY MDF  
 PPTDTLGYGGPEGAAAEPYGARGPGSLPLGPGPPTNYGPNPCPQQASYPDPTQET  
 WGEFPSHSGLYPGPKALGGTYSQCPRLEHYGQVQVKPEQGCPVGS DSTGLAPCL  
 NAHPSEGPPHPQPLFSHYPPSPQYLQSGPYTQPPPDYLPSEPRPCLDFD SPTHS  
 TGQLKAQLVCNYVQSQQELLWEGGGREDAPAQEPSYQSPKFLGGSQVSPSRAKA  
 PVNTYGPFGPNLPHKSGSYPTPSPCHENFVVGANRASHRAAAPRLLPPLPTCY  
 GPLKVGGTNPSCGHPEVGRLLGGGPALYPPPEGQVCNPLDSL DLDNTQLDFVAILDE  
 PQGLSPPPSHDQRGSSGHTPPPSGPPNMAVGNMSVLLRSLPGETEFLNSSATRTR  
 PLEQKLISEEDLAANDILDYKDDDDKV

<b>Purity</b>	> 80% as determined by SDS-PAGE and Coomassie blue staining
<b>Stability</b>	Stable for 3 months from receipt of products under proper storage and handling conditions.
<b>Storage</b>	Store at -80 centigrade. Avoid repeated freeze-thaw cycles.
<b>Concentration</b>	50 µg/mL as determined by BCA
<b>Storage Buffer</b>	100 mM glycine, 25 mM Tris-HCl, pH 7.3.

## GENE INFORMATION

<b>Gene Name</b>	GLI1 GLI family zinc finger 1 [ Homo sapiens (human) ]
<b>Official Symbol</b>	GLI1

**Synonyms** GLI1; GLI family zinc finger 1; GLI, glioma associated oncogene family zinc finger 1, glioma associated oncogene homolog 1 (zinc finger protein); zinc finger protein GLI1; oncogene GLI; glioma-associated oncogene 1; glioma-associated oncogene homolog 1 (zinc finger protein); GLI;

**Gene ID** [2735](#)

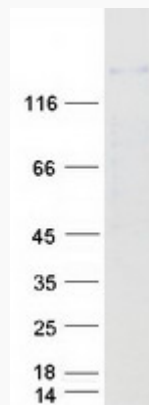
**mRNA Refseq** [NM\\_005269](#)

**Protein Refseq** [NP\\_005260](#)

**MIM** [165220](#)

**UniProt ID** [P08151](#)

**SDS-PAGE**



 Tel: 1-631-559-9269 1-516-512-3133

 Email: [info@creative-biomart.com](mailto:info@creative-biomart.com)  Fax: 1-631-938-8127

 45-1 Ramsey Road, Shirley, NY 11967, USA