

Recombinant Full Length Mouse GLI1 Protein, His tagged

Cat. No. GLI1-6401M Lot. No. (See product label)

SPECIFICATION

Product Overview	Recombinant Full Length Mouse GLI1 Protein with His tag was expressed in Insect Cells.
Species	Mouse
Source	Insect Cells
ProteinLength	1-1111 aa
Description	Enables several functions, including DNA-binding transcription factor activity, RNA polymerase II-specific; RNA polymerase II cis-regulatory region sequence-specific DNA binding activity; and microtubule binding activity. Involved in positive regulation of DNA-templated transcription and regulation of osteoblast differentiation. Acts upstream of or within several processes, including central nervous system development; liver regeneration; and regionalization. Located in axoneme and nucleus. Is expressed in several structures, including alimentary system; central nervous system; embryo mesenchyme; long bone; and sensory organ. Human ortholog(s) of this gene implicated in gallbladder cancer and preaxial polydactyly I. Orthologous to human GLI1 (GLI family zinc finger 1).
Molecular Mass	120 kDa
AASequence	MFNPMTPPQVNSYSEPCCLRPLHSQGVPSMGTEGLSGLPFCHQANFMSGSSQGYG AARETSSCTEGSLFPPPPPPRSSVKLTKKRALSISPLSDASLDLQTVIRTSPSSLVAFI NSRCTSPGGSYGHLSIGTMSPSLGFPPQMSHQKGTSPPYGVQPCVPHDSTRGSM

 Tel: 1-631-559-9269 1-516-512-3133

 Email: info@creative-biomart.com  Fax: 1-631-938-8127

 45-1 Ramsey Road, Shirley, NY 11967, USA

MLHPQSRGPRATCQLKSELDMMVGKCPEDPLEGDMSSPNSTGTQDHLLGMLDGR
 EDLEREEKPEPESVYETDCRWDGCSQEFDSEQLVHHINSEHIHGERKEFVCHWG
 GCSRELRPFKAQYMLVVHMRRHTGEKPHKCTFEGCRKSYSRLENLKTHLRSHTE
 KPVMCEQEGCSKAFSNASDRAKHQNRTHSNEKPYVCKLPGCTKRYTDPSSLRKHV
 KTVHGPDAHVTKRHRGDGPLPRAQPLSTVEPKREREGGSGREESRLTVPESAMPQ
 QSPGAQSSCSDHSPAGSAANTDSGVEMAGNAGGSTEDLSSLDEGPCVSATGLST
 LRRLENLRDLQLHQLRPIGSRGLKLPSTHAGAPVSRRLGPPVSLDRRSSSSSSSMSS
 AYTVSRRSSLASPFPPGTPPENGAASSLPGLTPAQHYMLRARYASARGSGTPTAAH
 SLDRMGGLSVPPWRSRTEYPGYNPNAGVTRRASDPARAADHPAPARVQRFKSLG
 CVHTPPSVATGRNFDPHHPTSVYSPQPPSITENVAMDTRGLQEEPEVGTSMVGN
 LNPYMDFSSTDTLGYGGPEGTAAPYEARGPGSLPLGPGPPTNYGPGHCAQQVSY
 PDPTPENWGEFPPSHAGVYPSNKAPGAAYSQCPRLEHYGQVQVKPEQGCPVGS
 TGLAPCLNAHPSEGSPGPQLFSHHPQLPQPYPQSGPYPPHGYLSTEPRLGL
 NFNPPSSSHSTGQLKAQLVCNYVQSQQELLWEGRNRRGGLPNQELPYQSPKFLGGS
 QVSQSPAKTPAAAAAYGSGFAPASANHKSGSYPPSPCHETFTVGVNRPSHRPA
 APPRLLPPLSPCYGPLKVGDTNPSCGHPEVGRLLGAGPALYPPPEGQVCNALDSL
 DNTQLDFVAILDEAQLSPPLSHEQGDSSKNTPSPSGPPNMAVGNMSVLLGSLPGE
 TQFLNSSAHHHHHHHHHH

Endotoxin	<1EU/μg by LAL
Purity	>80% by SDS-PAGE
Storage	Store it under sterile conditions at -20 to -80 centigrade. It is recommended that the protein be aliquoted for optimal storage. Avoid repeated freeze-thaw cycles.
Storage Buffer	Sterile PBS, pH7.4, 10% Glycerol
Concentration	0.27 mg/mL by BCA

 Tel: 1-631-559-9269 1-516-512-3133

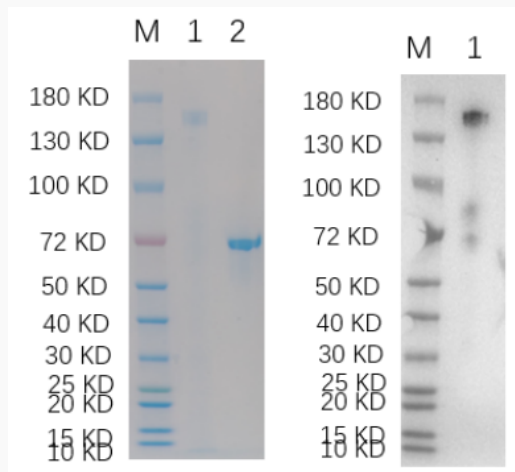
 Email: info@creative-biomart.com  Fax: 1-631-938-8127

 45-1 Ramsey Road, Shirley, NY 11967, USA

GENE INFORMATION

Gene Name	Gli1 GLI-Kruppel family member GLI1 [<i>Mus musculus</i> (house mouse)]
Official Symbol	Gli1
Synonyms	GLI1; GLI-Kruppel family member GLI1; zinc finger protein GLI1; zinc finger protein 5; glioma-associated oncogene homolog; Zfp5; Zfp-5; AV235269
Gene ID	14632
mRNA Refseq	NM_010296
Protein Refseq	NP_034426
UniProt ID	P47806

SDS-PAGE and WB



Reducing 4%-20% SDS-PAGE (CBB stained) and WB (Anti-His Mouse Monoclonal Antibody) analysis profiles of purified GLI1. 1. GLI1: 1 µg 2. BSA: 1 µg

Tel: 1-631-559-9269 1-516-512-3133

Email: info@creative-biomart.com Fax: 1-631-938-8127

45-1 Ramsey Road, Shirley, NY 11967, USA