

Recombinant Human GLI2 Protein (412-641 aa), His-tagged

Cat. No. GLI2-2038H Lot. No. (See product label)

SPECIFICATION

Product Overview	Recombinant Human GLI2 Protein (412-641 aa) is produced by Yeast expression system. This protein is fused with a 6xHis tag at the N-terminal. Research Area: Epigenetics and Nuclear Signaling. Protein Description: Partial.
Species	Human
Source	Yeast
ProteinLength	412-641 aa
Description	Functions as transcription regulator in the hedgehog (Hh) pathway (PubMed:18455992). Functions as transcriptional activator (PubMed:9557682, PubMed:19878745, PubMed:24311597). May also function as transcriptional repressor (By similarity). Requires STK36 for full transcriptional activator activity. Required for normal embryonic development (PubMed:15994174, PubMed:20685856).
Form	Tris-based buffer, 50% glycerol
Molecular Mass	28.5 kDa
AA Sequence	EQLADLKEDLDRDDCKQEAEEVVIYETNCHWEDCTKEYDTQEQLVHHINNEHIHGEK KEFVCRWQACTREQKPFKAQYMLVVHMRRHTGKPHKCTFEGCSKAYSRLNLKT HLRSHTGEKPYVCEHEGCNKAFSNASDRAKHQNRTHSNEKPYICKIPGCTKRYTDP SSLRKHVKTVHGPDAAHVTKKQRNDVHLRTPLLKENGDSEAGTEPGGPESTEASSTS

Tel: 1-631-559-9269 1-516-512-3133

Email: info@creative-biomart.com Fax: 1-631-938-8127

45-1 Ramsey Road, Shirley, NY 11967, USA

	QAVEDCL
Purity	> 90% as determined by SDS-PAGE.
Notes	Repeated freezing and thawing is not recommended. Store working aliquots at 4 centigrade for up to one week.
Storage	The shelf life is related to many factors, storage state, buffer ingredients, storage temperature and the stability of the protein itself. Generally, the shelf life of liquid form is 6 months at -20 centigrade/-80 centigrade. The shelf life of lyophilized form is 12 months at -20 centigrade/-80 centigrade.
Concentration	A hardcopy of COA with reconstitution instruction is sent along with the products.

GENE INFORMATION

Gene Name	GLI2 GLI family zinc finger 2 [Homo sapiens]
Official Symbol	GLI2
Synonyms	GLI2; GLI family zinc finger 2; HPE9; tax helper protein 1; tax helper protein 2; oncogene GLI2;
Gene ID	2736
mRNA Refseq	NM_005270
Protein Refseq	NP_005261
MIM	165230

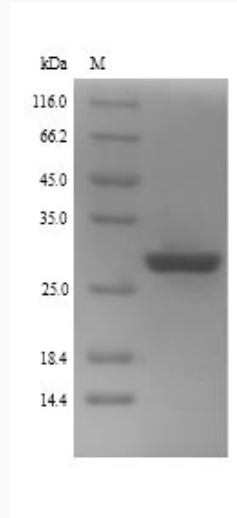
 Tel: 1-631-559-9269 1-516-512-3133

 Email: info@creative-biomart.com  Fax: 1-631-938-8127

 45-1 Ramsey Road, Shirley, NY 11967, USA

UniProt ID

P10070



(Tris-Glycine gel) Discontinuous SDS-PAGE (reduced) with 5% enrichment gel and 15% separation gel.

Tel: 1-631-559-9269 1-516-512-3133

Email: info@creative-biomart.com Fax: 1-631-938-8127

45-1 Ramsey Road, Shirley, NY 11967, USA