

Recombinant Human GLI2 protein, His-tagged

Cat. No. GLI2-5018H Lot. No. (See product label)

SPECIFICATION

Product Overview	Recombinant Human GLI2 protein(P10070)(412-641aa), fused to N-terminal His tag, was expressed in HEK293.
Species	Human
Source	HEK293
ProteinLength	412-641aa
Form	If the delivery form is liquid, the default storage buffer is Tris/PBS-based buffer, 5%-50% glycerol. If the delivery form is lyophilized powder, the buffer before lyophilization is Tris/PBS-based buffer, 6% Trehalose, pH 8.0.
Molecular Mass	30.5 kDa
Purity	Greater than 90% as determined by SDS-PAGE.
Storage	Store at -20°C/-80°C upon receipt, aliquoting is necessary for mutiple use. Avoid repeated freeze-thaw cycles.
Reconstitution	Please reconstitute protein in deionized sterile water to a concentration of 0.1-1.0 mg/mL. We recommend to add 5-50% of glycerol (final concentration) and aliquot for long-term storage at -20°C/-80°C. Our default final concentration of glycerol is 50%.

 Tel: 1-631-559-9269 1-516-512-3133

 Email: info@creative-biomart.com  Fax: 1-631-938-8127

 45-1 Ramsey Road, Shirley, NY 11967, USA

GENE INFORMATION

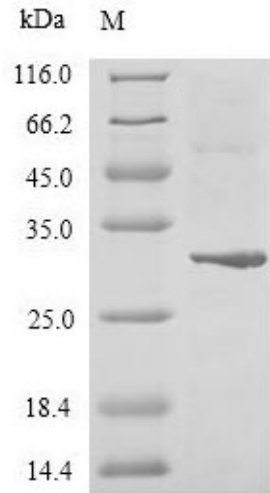
Gene Name	GLI2 GLI family zinc finger 2 [Homo sapiens]
Official Symbol	GLI2
Synonyms	GLI2; GLI family zinc finger 2; GLI Kruppel family member GLI2 , glioma associated oncogene family zinc finger 2; zinc finger protein GLI2; HPE9; tax helper protein 1; tax helper protein 2; tax responsive element 2 holding protein; THP1; THP2; oncogene GLI2; GLI-Kruppel family member GLI2; tax-responsive element-2 holding protein; glioma-associated oncogene family zinc finger 2; tax-responsive element-25-bp sequence binding protein;
Gene ID	2736
mRNA Refseq	NM_005270
Protein Refseq	NP_005261
MIM	165230
UniProt ID	P10070

 Tel: 1-631-559-9269 1-516-512-3133

 Email: info@creative-biomart.com  Fax: 1-631-938-8127

 45-1 Ramsey Road, Shirley, NY 11967, USA

SDS-PAGE



 Tel: 1-631-559-9269 1-516-512-3133

 Email: info@creative-biomart.com  Fax: 1-631-938-8127

 45-1 Ramsey Road, Shirley, NY 11967, USA