

## Recombinant Human GLI3 Protein, GST-tagged

**Cat. No.** GLI3-4956H    **Lot. No.** (See product label)

### SPECIFICATION

<b>Product Overview</b>	Human GLI3 partial ORF ( NP_000159, 1 a.a. - 110 a.a.) recombinant protein with GST-tag at N-terminal.
<b>Species</b>	Human
<b>Source</b>	Wheat Germ
<b>Description</b>	<p>This gene encodes a protein which belongs to the C2H2-type zinc finger proteins subclass of the Gli family. They are characterized as DNA-binding transcription factors and are mediators of Sonic hedgehog (Shh) signaling. The protein encoded by this gene localizes in the cytoplasm and activates patched Drosophila homolog (PTCH) gene expression. It is also thought to play a role during embryogenesis. Mutations in this gene have been associated with several diseases, including Greig cephalopolysyndactyly syndrome, Pallister-Hall syndrome, preaxial polydactyly type IV, and postaxial polydactyly types A1 and B. [provided by RefSeq</p>
<b>Molecular Mass</b>	37.84 kDa
<b>AA Sequence</b>	MEAQSHSSTTTEKKKVENSIVKCSRTRTDVSEKAVASSTTSNEDESPGQTYHRERRN AITMQPQNVQGLSKVSEEPSTSSDERASLIKKEIHGSLPHVAEPSVPYRGTVFA
<b>Applications</b>	<p>Enzyme-linked Immunoabsorbent Assay Western Blot (Recombinant protein) Antibody Production Protein Array</p>

 Tel: 1-631-559-9269    1-516-512-3133

 Email: [info@creative-biomart.com](mailto:info@creative-biomart.com)     Fax: 1-631-938-8127

 45-1 Ramsey Road, Shirley, NY 11967, USA

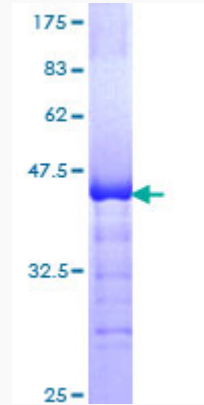
<b>Notes</b>	Best use within three months from the date of receipt of this protein.
<b>Storage</b>	Store at -80 centigrade. Aliquot to avoid repeated freezing and thawing.
<b>Storage Buffer</b>	50 mM Tris-HCl, 10 mM reduced Glutathione, pH=8.0 in the elution buffer.
<b>GENE INFORMATION</b>	
<b>Gene Name</b>	GLI3 GLI family zinc finger 3 [ Homo sapiens ]
<b>Official Symbol</b>	GLI3
<b>Synonyms</b>	GLI3; GLI family zinc finger 3; GCPS, GLI Kruppel family member GLI3, glioma associated oncogene family zinc finger 3, Greig cephalopolysyndactyly syndrome, PHS; transcriptional activator GLI3; ACLS; DNA binding protein; oncogene GLI3; PAP A; PAPA; PAPA1; PAPB; PPDIV; zinc finger protein GLI3; GLI-Kruppel family member GLI3; glioma-associated oncogene family zinc finger 3; PHS; GCPS; PAP-A; GLI3FL; GLI3-190;
<b>Gene ID</b>	2737
<b>mRNA Refseq</b>	NM_000168
<b>Protein Refseq</b>	NP_000159
<b>MIM</b>	165240
<b>UniProt ID</b>	P10071

 Tel: 1-631-559-9269 1-516-512-3133

 Email: [info@creative-biomart.com](mailto:info@creative-biomart.com)  Fax: 1-631-938-8127

 45-1 Ramsey Road, Shirley, NY 11967, USA

**Quality Control  
Testing**



12.5% SDS-PAGE Stained with Coomassie Blue.

 Tel: 1-631-559-9269 1-516-512-3133

 Email: [info@creative-biomart.com](mailto:info@creative-biomart.com)  Fax: 1-631-938-8127

 45-1 Ramsey Road, Shirley, NY 11967, USA