

Recombinant Human GLI4 Protein, GST-tagged

Cat. No. GLI4-4957H Lot. No. (See product label)

SPECIFICATION

| | |
|-------------------------|--|
| Product Overview | Human GLI4 full-length ORF (NP_612474.1, 1 a.a. - 376 a.a.) recombinant protein with GST-tag at N-terminal. |
| Species | Human |
| Source | Wheat Germ |
| Description | GLI4 (GLI Family Zinc Finger 4) is a Protein Coding gene. GO annotations related to this gene include transcription factor activity, sequence-specific DNA binding. An important paralog of this gene is ZNF696. |
| Molecular Mass | 67.5 kDa |
| AA Sequence | <p>MAALGDIQESPSVPSPVSLSSPGTPGTQHHEPQLHLHGHQHGSPGSSPKVLSQPS DLDLQDVVEVEIGRDTFWPDSEPKPEQAPRSPGSQAPDEGAGGALRSLRLPRRA RCSAGFGPESSAERPAGQPPGAVPCAQPRGAWRVTLVQQAAGPEGAPERAAEL GVNFRSRQGSARGAKPHRCEACGKSFKYNLLLLKHQRIHTGEKPYACHECGKRF RGWSGFIQHHRHTGEKPYECGQCGRAFSHSSHFTQHLRIHNGEKPYKCGECGQA FSQSSNLVRHQRLHTGEKPYACSQCGKAFIWSSVLIHQRIHTGEKPYECSDCGKA FRGRSHFFRHLRTHHTGEKPFACGACGKAFGQSSQLIQHQRVHYRE</p> |
| Applications | Enzyme-linked Immunoabsorbent Assay Western Blot (Recombinant protein) Antibody Production Protein Array |

 Tel: 1-631-559-9269 1-516-512-3133

 Email: info@creative-biomart.com  Fax: 1-631-938-8127

 45-1 Ramsey Road, Shirley, NY 11967, USA

| | |
|-----------------------|--|
| Notes | Best use within three months from the date of receipt of this protein. |
| Storage | Store at -80 centigrade. Aliquot to avoid repeated freezing and thawing. |
| Storage Buffer | 50 mM Tris-HCl, 10 mM reduced Glutathione, pH=8.0 in the elution buffer. |

GENE INFORMATION

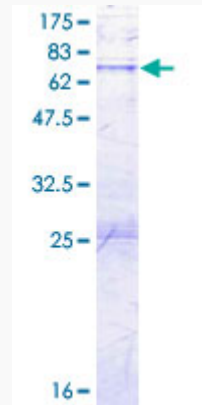
| | |
|------------------------|---|
| Gene Name | GLI4 GLI family zinc finger 4 [Homo sapiens] |
| Official Symbol | GLI4 |
| Synonyms | GLI4; GLI family zinc finger 4; GLI Kruppel family member GLI4, glioma associated oncogene family zinc finger 4; zinc finger protein GLI4; HKR4; ZNF928; krueppel-related zinc finger protein 4; GLI-Kruppel family member GLI4 (oncogene HKR4); glioma-associated oncogene family zinc finger 4; |
| Gene ID | 2738 |
| mRNA Refseq | NM_138465 |
| Protein Refseq | NP_612474 |
| MIM | 165280 |
| UniProt ID | P10075 |

 Tel: 1-631-559-9269 1-516-512-3133

 Email: info@creative-biomart.com  Fax: 1-631-938-8127

 45-1 Ramsey Road, Shirley, NY 11967, USA

**Quality Control
Testing**



12.5% SDS-PAGE Stained with Coomassie Blue.

 Tel: 1-631-559-9269 1-516-512-3133

 Email: info@creative-biomart.com  Fax: 1-631-938-8127

 45-1 Ramsey Road, Shirley, NY 11967, USA