

Recombinant Human GLIPR1 protein, His-tagged

Cat. No. GLIPR1-3190H Lot. No. (See product label)

SPECIFICATION

Product Overview	Recombinant Human GLIPR1 protein(NP_006842.2) extracellular domain (Met 1-Arg 232) was expressed in HEK293, with a C-terminal polyhistidine tag.
Species	Human
Source	HEK293
ProteinLength	1-232 aa
Form	Lyophilized from sterile PBS, pH 7.4.
Molecular Mass	The secreted recombinant human GLIPR1 comprises 222 amino acids and has a predicted molecular mass of 25.7 kDa. rhGLIPR1 migrates as an approximately 27 kDa band in SDS-PAGE under reducing conditions.
Endotoxin	< 1.0 EU per µg of the protein as determined by the LAL method.
Purity	> 97 % as determined by SDS-PAGE
Storage	Store it under sterile conditions at -20°C to -80°C upon receiving. Recommend to aliquot the protein into smaller quantities for optimal storage. Avoid repeated freeze-thaw cycles.
Reconstitution	It is recommended that sterile water be added to the vial to prepare a stock solution of 0.2 ug/ul. Centrifuge the vial at 4°C before opening to recover the entire contents.

 Tel: 1-631-559-9269 1-516-512-3133

 Email: info@creative-biomart.com  Fax: 1-631-938-8127

 45-1 Ramsey Road, Shirley, NY 11967, USA

protein Refseq-Weblink http://www.ncbi.nlm.nih.gov/protein/NP_006842.2

Unit ID P48060

Unit ID-Weblink <http://www.uniprot.org/uniprot/P48060>

GENE INFORMATION

Gene Name [GLIPR1 GLI pathogenesis-related 1 \[Homo sapiens \]](#)

Official Symbol [GLIPR1](#)

Synonyms GLIPR1; GLI pathogenesis-related 1; GLI pathogenesis related 1 (glioma); glioma pathogenesis-related protein 1; GliPR; RTVP1; gliPR 1; protein RTVP-1; GLI pathogenesis-related 1 (glioma); testes-specific vespid and pathogenesis protein 1; related to testis-specific, vespid, and pathogenesis proteins 1; GLIPR; CRISP7;

Gene ID [11010](#)

mRNA Refseq [NM_006851](#)

protein Refseq [NP_006842](#)

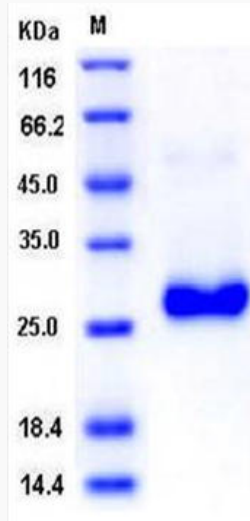
MIM [602692](#)

 Tel: 1-631-559-9269 1-516-512-3133

 Email: info@creative-biomart.com  Fax: 1-631-938-8127

 45-1 Ramsey Road, Shirley, NY 11967, USA

SDS-PAGE



 Tel: 1-631-559-9269 1-516-512-3133

 Email: info@creative-biomart.com  Fax: 1-631-938-8127

 45-1 Ramsey Road, Shirley, NY 11967, USA