

Recombinant Human GLIPR1 Protein (Asn22-Arg232), C-His tagged

Cat. No. GLIPR1-3451H Lot. No. (See product label)

SPECIFICATION

Product Overview	Recombinant human GLIPR1 (Asn22-Arg232) protein fused with the C-terminal His tag was expressed in Mammalian cells.
Species	Human
Source	Mammalian Cells
ProteinLength	Asn22-Arg232
Molecular Mass	23.21 kDa
Purity	>90 % as determined by SDS-PAGE.
Notes	For research use only.
Storage	Use a manual defrost freezer and avoid repeated freeze thaw cycles. Store at 2 to 8 centigrade for one week. Store at -20 to -80 centigrade for twelve months from the date of receipt.
Storage Buffer	Supplied as solution form in PBS or lyophilized from PBS.
Reconstitution	Reconstitute in sterile water for a stock solution.
Shipping	In general, proteins are provided as lyophilized powder/frozen liquid. They are

 Tel: 1-631-559-9269 1-516-512-3133

 Email: info@creative-biomart.com  Fax: 1-631-938-8127

 45-1 Ramsey Road, Shirley, NY 11967, USA

shipped out with dry ice/blue ice unless customers require otherwise.

GENE INFORMATION

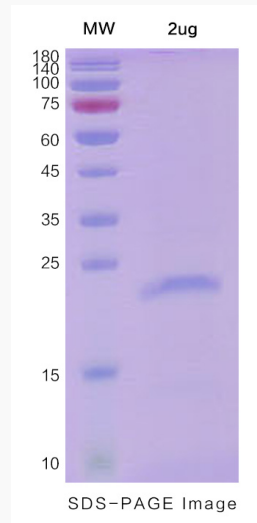
Gene Name	GLIPR1 GLI pathogenesis-related 1 [Homo sapiens (human)]
Official Symbol	GLIPR1
Synonyms	GLIPR1; GLI pathogenesis-related 1; GLI pathogenesis related 1 (glioma); glioma pathogenesis-related protein 1; GliPR; RTVP1; gliPR 1; protein RTVP-1; GLI pathogenesis-related 1 (glioma); testes-specific vespid and pathogenesis protein 1; related to testis-specific, vespid, and pathogenesis proteins 1; GLIPR; CRISP7;
Gene ID	11010
mRNA Refseq	NM_006851
Protein Refseq	NP_006842
MIM	602692
UniProt ID	P48060

 Tel: 1-631-559-9269 1-516-512-3133

 Email: info@creative-biomart.com  Fax: 1-631-938-8127

 45-1 Ramsey Road, Shirley, NY 11967, USA

SDS-PAGE



 Tel: 1-631-559-9269 1-516-512-3133

 Email: info@creative-biomart.com  Fax: 1-631-938-8127

 45-1 Ramsey Road, Shirley, NY 11967, USA