

Recombinant Human GLIPR1 Protein, GST-tagged

Cat. No. GLIPR1-4959H **Lot. No.** (See product label)

SPECIFICATION

Product Overview	Human GLIPR1 partial ORF (NP_006842, 23 a.a. - 99 a.a.) recombinant protein with GST-tag at N-terminal.
Species	Human
Source	Wheat Germ
Description	This gene encodes a protein with similarity to both the pathogenesis-related protein (PR) superfamily and the cysteine-rich secretory protein (CRISP) family. Increased expression of this gene is associated with myelomocytic differentiation in macrophage and decreased expression of this gene through gene methylation is associated with prostate cancer. The protein has proapoptotic activities in prostate and bladder cancer cells. This gene is a member of a cluster on chromosome 12 containing two other similar genes. Alternatively spliced variants which encode different protein isoforms have been described; however, not all variants have been fully characterized. [provided by RefSeq]
Molecular Mass	34.21 kDa
AA Sequence	NILPDIENEDFIKDCVRIHNKFRSEVKPTASDMLYMTWDPALAQIAKAWASNCQFSH NTRLKPPHKLHPNFTSLGEN
Applications	Enzyme-linked Immunoabsorbent Assay Western Blot (Recombinant protein) Antibody Production

 Tel: 1-631-559-9269 1-516-512-3133

 Email: info@creative-biomart.com  Fax: 1-631-938-8127

 45-1 Ramsey Road, Shirley, NY 11967, USA

Protein Array

Notes	Best use within three months from the date of receipt of this protein.
Storage	Store at -80 centigrade. Aliquot to avoid repeated freezing and thawing.
Storage Buffer	50 mM Tris-HCl, 10 mM reduced Glutathione, pH=8.0 in the elution buffer.

GENE INFORMATION

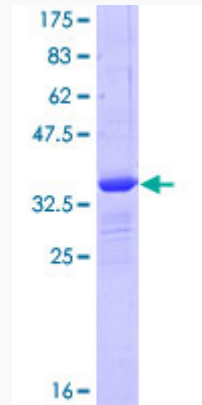
Gene Name	GLIPR1 GLI pathogenesis-related 1 [Homo sapiens]
Official Symbol	GLIPR1
Synonyms	GLIPR1; GLI pathogenesis-related 1; GLI pathogenesis related 1 (glioma); glioma pathogenesis-related protein 1; GliPR; RTVP1; gliPR 1; protein RTVP-1; GLI pathogenesis-related 1 (glioma); testes-specific vespind and pathogenesis protein 1; related to testis-specific, vespind, and pathogenesis proteins 1; GLIPR; CRISP7;
Gene ID	11010
mRNA Refseq	NM_006851
Protein Refseq	NP_006842
MIM	602692
UniProt ID	P48060

 Tel: 1-631-559-9269 1-516-512-3133

 Email: info@creative-biomart.com  Fax: 1-631-938-8127

 45-1 Ramsey Road, Shirley, NY 11967, USA

**Quality Control
Testing**



12.5% SDS-PAGE Stained with Coomassie Blue.

 Tel: 1-631-559-9269 1-516-512-3133

 Email: info@creative-biomart.com  Fax: 1-631-938-8127

 45-1 Ramsey Road, Shirley, NY 11967, USA