

Recombinant Human GLIPR1L1 Protein, GST-tagged

Cat. No. GLIPR1L1-4960H Lot. No. (See product label)

SPECIFICATION

Product Overview	Human GLIPR1L1 full-length ORF (NP_689992.1, 1 a.a. - 233 a.a.) recombinant protein with GST-tag at N-terminal.
Species	Human
Source	Wheat Germ
Description	GLIPR1L1 (GLI Pathogenesis Related 1 Like 1) is a Protein Coding gene. An important paralog of this gene is GLIPR1.
Molecular Mass	52.5 kDa
AA Sequence	MALKNKFSCWLWILGLCLVATTSSKIPSITDPHFIDNCIEAHNEWRGKVNPPAADMKYM IWDKGLAKMAKAWANQCKFEHNDCLDKSYKCYAAFEYVGENIWLGGIKSFTPRHAI TAWYNETQFYDFDSLCSRVCGHYQLVWANSFYVGCAMCPNLGGASTAIFVC NYGPAGNFANMPYVVRGESCSLCSKEEKCVKNLCKNPFLKPTGRAPQQTAFNPFS LGFLLLRIF
Applications	Enzyme-linked Immunoabsorbent Assay Western Blot (Recombinant protein) Antibody Production Protein Array
Notes	Best use within three months from the date of receipt of this protein.

 Tel: 1-631-559-9269 1-516-512-3133

 Email: info@creative-biomart.com  Fax: 1-631-938-8127

 45-1 Ramsey Road, Shirley, NY 11967, USA

Storage Store at -80 centigrade. Aliquot to avoid repeated freezing and thawing.

Storage Buffer 50 mM Tris-HCl, 10 mM reduced Glutathione, pH=8.0 in the elution buffer.

GENE INFORMATION

Gene Name GLIPR1L1 GLI pathogenesis-related 1 like 1 [Homo sapiens]

Official Symbol GLIPR1L1

Synonyms GLIPR1L1; GLI pathogenesis-related 1 like 1; GLIPR1-like protein 1; MGC26856; PRO7434; ALKN2972;

Gene ID 256710

mRNA Refseq NM_152779

Protein Refseq NP_689992

MIM 610395

UniProt ID Q6UWM5

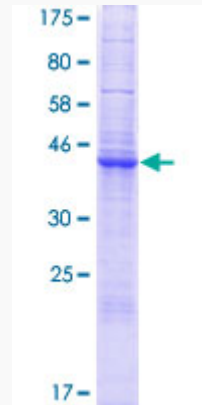
 Tel: 1-631-559-9269 1-516-512-3133

 Email: info@creative-biomart.com  Fax: 1-631-938-8127

 45-1 Ramsey Road, Shirley, NY 11967, USA



**Quality Control
Testing**



12.5% SDS-PAGE Stained with Coomassie Blue.

Tel: 1-631-559-9269 1-516-512-3133

Email: info@creative-biomart.com Fax: 1-631-938-8127

45-1 Ramsey Road, Shirley, NY 11967, USA