

## Recombinant Human GLIPR2 Protein, Myc/DDK-tagged

Cat. No. GLIPR2-001H Lot. No. (See product label)

### SPECIFICATION

<b>Product Overview</b>	Recombinant protein of human GLI pathogenesis-related 2 (GLIPR2) with a C-Myc/DDK tag was expressed in HEK293T.
<b>Species</b>	Human
<b>Source</b>	HEK293
<b>Description</b>	Broad expression in lung (RPKM 23.8), appendix (RPKM 20.8) and 24 other tissues.
<b>Molecular Mass</b>	17 kDa
<b>Purity</b>	> 80% as determined by SDS-PAGE and Coomassie blue staining
<b>Stability</b>	Stable for 12 months from the date of receipt of the product under proper storage and handling conditions. Avoid repeated freeze-thaw cycles.
<b>Storage</b>	Store at -80 centigrade.
<b>Concentration</b>	>50 µg/mL as determined by microplate BCA method
<b>Storage Buffer</b>	25 mM Tris.HCl, pH 7.3, 100 mM glycine, 10% glycerol

### GENE INFORMATION

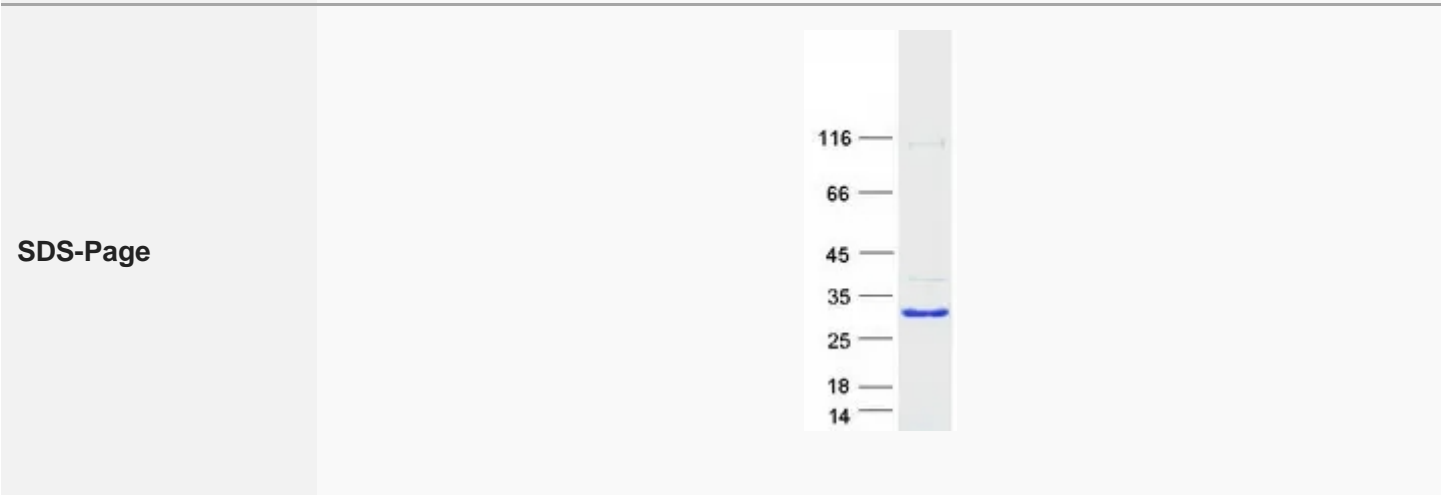
**Gene Name** GLIPR2 GLI pathogenesis related 2 [ Homo sapiens (human) ]

 Tel: 1-631-559-9269 1-516-512-3133

 Email: [info@creative-biomart.com](mailto:info@creative-biomart.com)  Fax: 1-631-938-8127

 45-1 Ramsey Road, Shirley, NY 11967, USA

<b>Official Symbol</b>	GLIPR2
<b>Synonyms</b>	GLIPR2; GLI pathogenesis related 2; GAPR1; GAPR-1; C9orf19; Golgi-associated plant pathogenesis-related protein 1; 17kD fetal brain protein; gliPR 2; glioma pathogenesis-related protein 2; golgi-associated PR-1 protein
<b>Gene ID</b>	152007
<b>mRNA Refseq</b>	NM_022343
<b>Protein Refseq</b>	NP_071738
<b>MIM</b>	607141
<b>UniProt ID</b>	Q9H4G4



Tel: 1-631-559-9269 1-516-512-3133

Email: [info@creative-biomart.com](mailto:info@creative-biomart.com) Fax: 1-631-938-8127

45-1 Ramsey Road, Shirley, NY 11967, USA