

Recombinant Human GLIPR2 Protein, MYC/DDK-tagged, C13 and N15-labeled

Cat. No. GLIPR2-114H Lot. No. (See product label)

SPECIFICATION

Product Overview	GLIPR2 MS Standard C13 and N15-labeled recombinant protein (NP_071738) with a C-terminal MYC/DDK tag, was expressed in HEK293 cells.
Species	Human
Source	HEK293
Description	GLIPR2 (GLI Pathogenesis Related 2) is a Protein Coding gene. Gene Ontology (GO) annotations related to this gene include protein homodimerization activity. An important paralog of this gene is GLIPR1L1.
Molecular Mass	17 kDa
AA Sequence	MGKSASKQFHNEVLKAHNEYRQKHGVPPLKLCCKNLNREAQQYSEALASTRILKHSP ESSRGQCGENLAWASYDQTGKEVADRWYSEIKNYNFQQPGFTSGTGHFTAMVWK NTKKMGVVGKASASDGSSFVVARYFPAGNVVNEGFFEENVLPPKKTRTRPLEQKLIS EEDLAANDILDYKDDDDKV
Purity	> 80% as determined by SDS-PAGE and Coomassie blue staining
Stability	Stable for 3 months from receipt of products under proper storage and handling conditions.
Storage	Store at -80 centigrade. Avoid repeated freeze-thaw cycles.

 Tel: 1-631-559-9269 1-516-512-3133

 Email: info@creative-biomart.com  Fax: 1-631-938-8127

 45-1 Ramsey Road, Shirley, NY 11967, USA

Concentration 50 µg/mL as determined by BCA

Storage Buffer 100 mM glycine, 25 mM Tris-HCl, pH 7.3.

GENE INFORMATION

Gene Name [GLIPR2 GLI pathogenesis related 2 \[Homo sapiens \(human\) \]](#)

Official Symbol [GLIPR2](#)

Synonyms GLIPR2; GLI pathogenesis related 2; C9orf19; GAPR-1; GAPR1; Golgi-associated plant pathogenesis-related protein 1; 17kD fetal brain protein; gliPR 2; glioma pathogenesis-related protein 2; golgi-associated PR-1 protein

Gene ID [152007](#)

mRNA Refseq [NM_022343](#)

Protein Refseq [NP_071738](#)

MIM [607141](#)

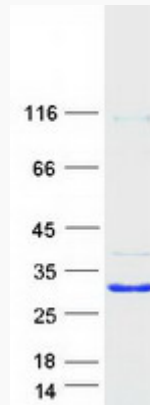
UniProt ID [Q9H4G4](#)

 Tel: 1-631-559-9269 1-516-512-3133

 Email: info@creative-biomart.com  Fax: 1-631-938-8127

 45-1 Ramsey Road, Shirley, NY 11967, USA

SDS-PAGE



 Tel: 1-631-559-9269 1-516-512-3133

 Email: info@creative-biomart.com  Fax: 1-631-938-8127

 45-1 Ramsey Road, Shirley, NY 11967, USA