

## Recombinant Human GLIPR2 Protein, GST-Tagged

**Cat. No.** GLIPR2-1307H    **Lot. No.** (See product label)

### SPECIFICATION

<b>Product Overview</b>	Human C9orf19 full-length ORF (NP_071738.1, 1 a.a. - 154 a.a.) recombinant protein with GST-tag at N-terminal.
<b>Species</b>	Human
<b>Source</b>	Wheat Germ
<b>Description</b>	GLIPR2 (GLI Pathogenesis Related 2) is a Protein Coding gene. GO annotations related to this gene include protein homodimerization activity.
<b>Molecular Mass</b>	43.6 kDa
<b>AA Sequence</b>	MGKSASKQFHNEVLKAHNEYRQKHGVPPLKCKNLNREAQQYSEALASTRILKHSP ESSRGQCGENLAWASYDQTGKEVADRWYSEIKNYNFQQPGFTSGTGHFTAMVWK NTKKMGVVGKASASDGSSFVVARYFPAGNVVNEGFFEENVLPPKK
<b>Applications</b>	Enzyme-linked Immunoabsorbent Assay Western Blot (Recombinant protein) Antibody Production Protein Array
<b>Storage</b>	Store at -80 centigrade. Aliquot to avoid repeated freezing and thawing.
<b>Storage Buffer</b>	50 mM Tris-HCl, 10 mM reduced Glutathione, pH=8.0 in the elution buffer.

 Tel: 1-631-559-9269    1-516-512-3133

 Email: [info@creative-biomart.com](mailto:info@creative-biomart.com)     Fax: 1-631-938-8127

 45-1 Ramsey Road, Shirley, NY 11967, USA

## GENE INFORMATION

**Gene Name** GLIPR2 GLI pathogenesis-related 2 [ Homo sapiens ]

**Official Symbol** GLIPR2

**Synonyms** GLIPR2; GLI pathogenesis-related 2; C9orf19, chromosome 9 open reading frame 19; Golgi-associated plant pathogenesis-related protein 1; GAPR 1; gliPR 2; 17kD fetal brain protein; golgi-associated PR-1 protein; glioma pathogenesis-related protein 2; GAPR-1; C9orf19;

**Gene ID** 152007

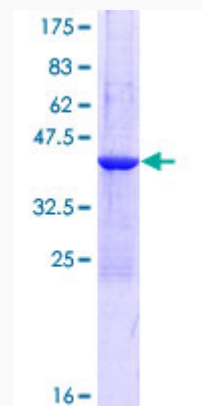
**mRNA Refseq** NM\_022343

**Protein Refseq** NP\_071738

**MIM** 607141

**UniProt ID** Q9H4G4

**Quality Control Testing**



 Tel: 1-631-559-9269 1-516-512-3133

 Email: [info@creative-biomart.com](mailto:info@creative-biomart.com)  Fax: 1-631-938-8127

 45-1 Ramsey Road, Shirley, NY 11967, USA



12.5% SDS-PAGE Stained with Coomassie Blue.

 Tel: 1-631-559-9269 1-516-512-3133

 Email: [info@creative-biomart.com](mailto:info@creative-biomart.com)  Fax: 1-631-938-8127

 45-1 Ramsey Road, Shirley, NY 11967, USA