

Recombinant Full Length Human GLIS2 Protein, His tagged

Cat. No. GLIS2-10HFL Lot. No. (See product label)

SPECIFICATION

Product Overview	Purified recombinant protein of Human GLIS family zinc finger 2 (GLIS2), full length, with N-terminal His tag, expressed in E. coli
Species	Human
Source	E.coli
ProteinLength	1-524 aa
Description	<p>This gene is a member of the GLI-similar zinc finger protein family and encodes a nuclear transcription factor with five C2H2-type zinc finger domains. The protein encoded by this gene is widely expressed at low levels in the neural tube and peripheral nervous system and likely promotes neuronal differentiation. It is abundantly expressed in the kidney and may have a role in the regulation of kidney morphogenesis. p120 regulates the expression level of this protein and induces the cleavage of this protein's C-terminal zinc finger domain. This protein also promotes the nuclear translocation of p120. Mutations in this gene cause nephronophthisis (NPHP), an autosomal recessive kidney disease characterized by tubular basement membrane disruption, interstitial lymphohistiocytic cell infiltration, and development of cysts at the corticomedullary border of the kidneys.</p>
Molecular Mass	55.5 kDa
Purity	> 80% as determined by SDS-PAGE and Coomassie blue staining

 Tel: 1-631-559-9269 1-516-512-3133

 Email: info@creative-biomart.com  Fax: 1-631-938-8127

 45-1 Ramsey Road, Shirley, NY 11967, USA

Note	For testing in cell culture applications, please filter before use. Note that you may experience some loss of protein during the filtration process.
Stability	Stable for 12 months from the date of receipt of the product under proper storage and handling conditions. Avoid repeated freeze-thaw cycles.
Storage	Store at -80 centigrade.
Storage Buffer	25 mM Tris-HCl, pH 8.0, 150 mM NaCl, 1% sarkosyl, 10% glycerol
Concentration	> 0.05 µg/µL as determined by microplate BCA method
Shipping	Dry Ice

GENE INFORMATION

Gene Name	GLIS2 GLIS family zinc finger 2 [Homo sapiens (human)]
Official Symbol	GLIS2
Synonyms	GLIS2; GLIS family zinc finger 2; zinc finger protein GLIS2; nephrocystin 7; NPHP7; GLI-similar 2; nephrocystin-7; GLI-similar protein 2; neuronal Krueppel-like protein; Kruppel-like zinc finger protein GLIS2; NKL; FLJ38247;
Gene ID	84662
mRNA Refseq	NM_032575
Protein Refseq	NP_115964
MIM	608539

 Tel: 1-631-559-9269 1-516-512-3133

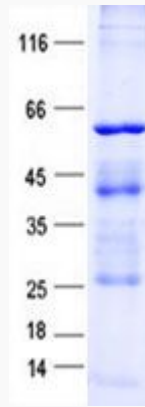
 Email: info@creative-biomart.com  Fax: 1-631-938-8127

 45-1 Ramsey Road, Shirley, NY 11967, USA

UniProt ID

Q9BZE0

SDS-PAGE



 Tel: 1-631-559-9269 1-516-512-3133

 Email: info@creative-biomart.com  Fax: 1-631-938-8127

 45-1 Ramsey Road, Shirley, NY 11967, USA